



IOM - OIM

WARRRAP

Village Assessment Survey County Profiles



VILLAGE ASSESSMENT SURVEY COUNTY PROFILES

WARRAP

2012 -2013

Gogrial East

Gogrial West

Tonj North

Twic



The Village Assessment Survey (VAS) has been used by IOM since 2007 and is a comprehensive data source for South Sudan that provides granular data from 30 priority counties with the aim of informing reintegration assistance around basic services and infrastructure, livelihoods, land and shelter, WASH, education, health, and protection.

The most recent VAS represents IOM's largest effort to date and after consultations with the Government of South Sudan Relief and Rehabilitation Commission (RRC), UN agencies, and state-level partners, 30 priority counties were identified for the assessment. These comprise of 871 bomas, 197 payams, 468 health facilities, and 1,277 primary schools. There was a particular emphasis on assessing payams outside state capitals, where comparatively fewer comprehensive assessments have been carried out. IOM conducted the VAS in priority counties that represent an estimated 72% of the returnee population.

Methodology

The data presented are the results of four integrated questionnaires. At the boma level, a Boma Questionnaire gathered data in relation to basic services and socioeconomic conditions from boma committees, composed of the boma chief, as well as representatives of the youth, women, and returnees.

In bomas where the Boma Questionnaire was being administered, separate Health and Education Technical Questionnaires were also distributed to healthcare workers and education administrators in order to capture specific data on the level of capacity and structure of public services provided to the boma.

At the payam level, a Payam Authority Questionnaire was distributed to senior payam officials for an additional source of data and for comparison with the boma level responses. All of these research instruments supply triangulated sources of information, as they are independent verifications of information collected at the boma and payam level.

Selection Process and Data Analysis

State capitals were excluded from the assessment due to the fact that these had already been the subject of previous studies. Likewise, payams within state capitals were not surveyed while those outside the capital were included. In consultation with the RRC, UN agencies, and state-level partners, counties not previously considered were identified for the assessment.

Guide to Booklets

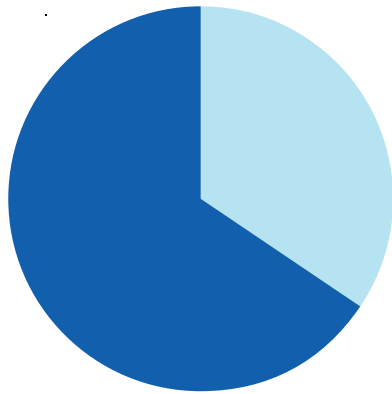
As a guide to reading the tables, please note that entries with a dash (-) indicate an absence of data while entries with a zero (0) indicate a total of zero responses.

The following booklets represent the data of VAS 2013 organised alphabetically by County.

COUNTY PROFILE

GOGRIAL EAST, WARRAP

County Population Information



Current (2012) Population
(Source: Est. from NBS)

114,593

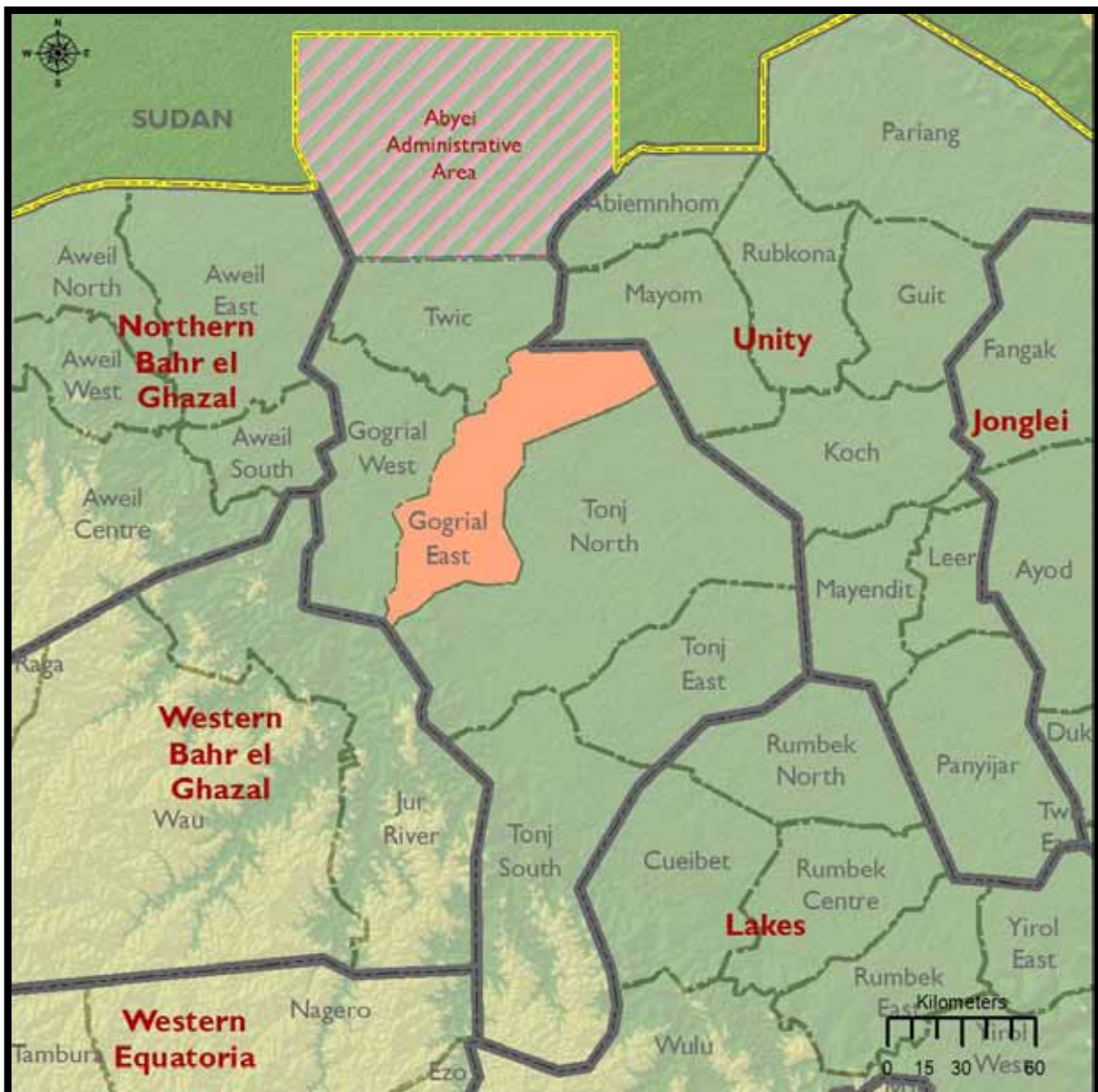
Returnees, Feb 2007-Dec 2012
(Source: IOM)

19,728

Ratio of Returnees to
Population

17.22%

GOGRIAL EAST, WARRAP



Payams & Bomas		
Payam	Boma	Number of Villages
Nyang	Cuei-bet	7
	Majok-Joor	5
	Mayen-Jur	7
Pathoun East	Yiik-Adoor	5
Pathoun West	Luonyaker	7
	Majok	6
Toch East	Mangol Apuk	7
	Nyangdit	7
	Thuramuon	7
Toch North	Mayom Chol	6
	Mayom Biong	7
Toch West	Malual Awien	5
	Pamacier	5

Demographic Indicators of Respondents & Land Status

Payam	Main Tribes	Main Languages	Average Household Size (persons)	Main Settlement Types	Main Land Ownerships	Presence of Mines/UXO per Boma
Nyang	Dinka	Dinka	Max 13 Min 7	Permanent Nomadic	Communal Ancestral	0 of 3
Pathoun East	Dinka	Dinka	Max 13 Min 7	Permanent Nomadic	Communal Ancestral	0 of 1
Pathoun West	Dinka	Dinka	Max 14 Min 6	Permanent	Ancestral	0 of 2
Toch East	Dinka	Dinka	Max 14 Min 7	Permanent Nomadic	Communal Ancestral	1 of 3
Toch North	Dinka	Dinka	Max 13 Min 7	Permanent Nomadic	Communal Ancestral	0 of 2
Toch West	Dinka	Dinka Arabic	Max 9 Min 8	Permanent Nomadic	Ancestral Informal	0 of 2

LIVELIHOODS (BQ 2012)

Agricultural Practices & Challenges

Payam	Bomas Engaged in Farming	Food Crops Grown	Production Needs	Major Problems
Nyang	3 of 3	Maize Sorghum Sesame Groundnuts Millet Other	Land Seed Tools Training Tractor Ox plough	Crop disease Other crop damage Market accessibility Conflict Natural disaster
Pathoun East	1 of 1	Maize Sorghum Sesame Groundnuts Millet	Seed Tools Fertilizers Training Tractor Ox plough Irrigation equipment	Crop disease Other crop damage Conflict Natural disaster
Pathoun West	2 of 2	Maize Sorghum Sesame Groundnuts Millet	Seed Tools Training Tractor Ox plough	Crop disease Other crop damage Market accessibility Conflict Natural disaster
Toch East	3 of 3	Maize Sorghum Sesame Groundnuts Vegetables Millet Other	Seed Tools Fertilizers Labor Training Tractor Ox plough Irrigation equipment	Crop disease Other crop damage Market accessibility Conflict Natural disaster
Toch North	2 of 2	Maize Sorghum Sesame Groundnuts Millet Other	Seed Tools Training Tractor Ox plough	Crop disease Other crop damage Market accessibility Conflict Natural disaster
Toch West	2 of 2	Maize Sorghum Sesame Groundnuts Millet Other	Seed Tools Training Tractor Ox plough	Crop disease Other crop damage Market accessibility Conflict Natural disaster

Pastoralist Practices, Challenges & Market Access

Payam	Bomas Engaged in Livestock	Primary Livestock	Bomas with Livestock Market	Major Problems
Nyang	3 of 3	Cattle Sheep Goats Other	0 of 3	Grazing land Diseases Water Market facilities Conflict Drought/Floods
Pathoun East	1 of 1	Cattle Sheep Goats Other	0 of 1	Grazing land Diseases Water Conflict Drought/Floods
Pathoun West	2 of 2	Cattle Sheep Goats Other	1 of 2	Grazing land Diseases Water Market facilities Conflict Drought/Floods
Toch East	3 of 3	Cattle Sheep Goats Other	3 of 3	Grazing land Diseases Water Market facilities Conflict Drought/Floods
Toch North	2 of 2	Cattle Sheep Goats Other	0 of 2	Grazing land Diseases Water Market facilities Conflict Drought/Floods
Toch West	2 of 2	Cattle Sheep Goats Other	0 of 2	Grazing land Diseases Market facilities

Fishing Practices, Challenges & Alternate Means of Income

Payam	Bomas Engaged in Fisheries	Major Problems	Other Means of Income
Nyang	3 of 3	Lack of inputs Storage facility Market facility Conflict Other	Income generating activities
Pathoun East	1 of 1	Lack of inputs Droughts/Floods Storage facility Market facility Conflict	Income generating activities
Pathoun West	2 of 2	Lack of inputs Droughts/Floods Storage facility Market facility Conflict	Employment Income generating activities
Toch East	3 of 3	Lack of inputs Storage facility Market facility Conflict	Income generating activities
Toch North	2 of 2	Lack of inputs Droughts/Floods Storage facility Market facility Conflict	Income generating activities
Toch West	2 of 2	Lack of inputs Droughts/Floods Storage facility Market facility Conflict	Income generating activities

Shocks & Coping Mechanisms

Payam	Period of Scarcity	Coping with Scarcity	Shocks in Past 2 Years	Coping with Shocks
Nyang	May – Sept	Loans Forest fruit and vegetables	Drought Disease Human epidemic Crop disease Conflict	Wait for assistance Migrate Sell livestock
Pathoun East	April – Aug	Forest fruit and vegetables	Drought Human epidemic Crop disease	Wait for assistance
Pathoun West	April – Aug	Forest fruit and vegetables	Drought Floods Disease Human epidemic Crop disease Pests	Wait for assistance
Toch East	March – Sept	Forest fruit and vegetables	Drought Disease Human epidemic Crop disease Pests Conflict	Wait for assistance Migrate Sell livestock
Toch North	April – Sept	Forest fruit and vegetables	Drought Human epidemic	Wait for assistance
Toch West	May – Aug	Forest fruits and vegetables	Drought Floods Disease Human epidemic Crop disease Pests	Wait for assistance Sell livestock

HEALTH (BQ 2012 & HEALTH TECHNICAL)

Health Facilities by Type, Attendance & Availability of Trained Personnel

Payam	Hospitals	PHCCs	PHCUs	Bomas w/Facilities	Avg. Annual Facility Attendance ^[1]	Bomas w/Doctor	Bomas w/ MCHW	Bomas w/Nurse
Nyang	0	0	1	1 of 3	-	0 of 1	1 of 1	0 of 1
Pathoun East	0	0	1	1 of 1	2,696	0 of 2	0 of 2	0 of 2
Pathoun West	0	1	1	2 of 2	3,234	0 of 2	1 of 2	1 of 2
Toch East	0	1	2	3 of 3	-	0 of 3	0 of 3	1 of 3
Toch North	0	0	2	2 of 2	384	0 of 2	0 of 2	0 of 2
Toch West	0	0	1	0 of 2	546	0 of 1	0 of 1	0 of 1

^[1] Mean average facility attendance covers facility reported patient intake for 2009-2011.

Health Awareness Raising Activities & Epidemiological Indicators

Payam	Bomas with Education Awareness on HIV/AIDS (Source: BQ)	Facility Conducts Immunization	Top Illness U5s	Past Outbreak	Likely Outbreak
Nyang	2 of 3	0 of 1	Malaria	Malaria	Cholera Meningitis
Pathoun East	1 of 1	1 of 2	Malaria Diarrhea	Cholera Measles Malaria	Cholera Malaria Diarrhea Other
Pathoun West	2 of 2	2 of 2	Worm parasite	Malaria	Cholera Measles Malaria Other
Toch East	2 of 3	1 of 3	Malaria	Malaria	Measles
Toch North	0 of 2	1 of 2	Malaria	Malaria	Measles Diarrhea Other
Toch West	1 of 1	0 of 1	Malaria	Malaria	None

WATER & SANITATION (BQ 2012)

Water Accessibility, Migration & Conflict

Payam	Most Year-Round Accessible Source	Water Accessible to All per Boma	Seasonal Migration	Conflict on Migration Route Due to Competition for Water per Boma	Local Water Conflicts per Boma
Nyang	Borehole	0 of 3	Jan – May	1 of 3	2 of 3
Pathoun East	Stream Borehole	0 of 1	Nov – May	0 of 1	1 of 1
Pathoun West	Borehole Tanker	0 of 2	Jan – May	0 of 2	1 of 2
Toch East	Borehole	0 of 3	Dec – May	0 of 3	3 of 3
Toch North	Borehole	1 of 2	Dec – May	1 of 2	2 of 2
Toch West	River	1 of 2	Feb – May	0 of 2	1 of 2

Sanitation Facilities and Hygiene Education

Payam	Most Common Latrine Type	Bomas with Hygiene Education in Past 2 Years
Nyang	None	3 of 3
Pathoun East	None	1 of 1
Pathoun West	None	2 of 2
Toch East	None	3 of 3
Toch North	None	1 of 2
Toch West	None	2 of 2

EDUCATION (BQ 2012 & EDUCATION TECHNICAL)

School Availability by Grade, Curriculum & Estimated Attendance Rate

Payam	Schools <S4	Schools =S4	Schools <S6	Schools <S8	Curriculums	% Attending ^[1]	% Girls Attending
Nyang	1	1	0	1	Kenya Uganda New S. Sudan	42%	75%
Pathoun East	0	2	3	2	New S. Sudan	95%	75%
Pathoun West	0	0	4	5	New S. Sudan Other	95%	25%
Toch East	1	0	2	3	Old Sudan Kenya New S. Sudan	100%	100%
Toch North	1	1	2	3	New S. Sudan	62%	95%
Toch West	0	1	2	1	Old Sudan New S. Sudan	95%	100%

^[1] Source: BQ 2012.

Causes of School Dropout & Needs

Payam	Boys Reasons for Dropping Out	Girls Reasons for Dropping Out	Bomas with School	Most Urgent Needs ^[2]
Nyang	Distance Conflict Family decision Migration Other	Distance Early marriage Family decision Migration Other	3 of 3	Trained teachers Additional classes Other
Pathoun East	School fees Distance Family decision Other	School fees Distance Early marriage Family decision	1 of 1	Trained teachers
Pathoun West	Distance Family decision Migration Other	School fees Distance Early marriage Family decision Migration Other	2 of 2	Additional classes Other
Toch East	Distance Conflict Family decision Other	Distance Conflict Early marriage Family decision Other	3 of 3	Trained teachers School feeding Other
Toch North	Distance Family decision Migration Other	Distance Early marriage Family decision Migration	2 of 2	Additional classes Other
Toch West	Distance Family decision	Early marriage Family decision Migration	2 of 2	Additional classes

^[2] Source: BQ 2012.

PROTECTION (BQ 2012)

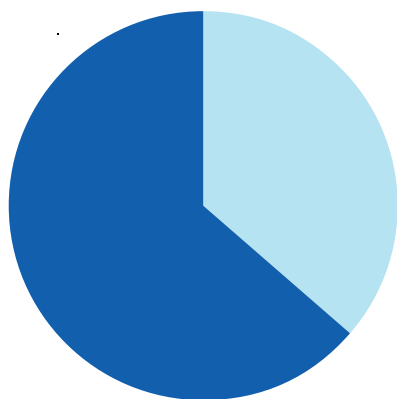
Internal & External Threats & Availability of Rule of Law Institutions

Payam	External Threat	Internal Threat	Women Feel Unsafe per Boma	Bomas with Police Station	Bomas with Traditional Court
Nyang	Armed conflict Drought Hunger Epidemics	Local conflict Domestic violence Seasonal road access Crop disease Livestock disease	3 of 3	1 of 3	3 of 3
Pathoun East	Armed conflict Drought Floods Epidemics	Domestic violence Violence against women Seasonal road access Crop disease	0 of 1	1 of 1	1 of 1
Pathoun West	Drought Floods Hunger Epidemics	Domestic violence Crop disease Livestock disease	0 of 2	2 of 2	2 of 2
Toch East	Armed conflict Drought Hunger Epidemics	Local conflict Domestic violence Seasonal road access Crop disease Livestock disease	2 of 3	2 of 3	3 of 3
Toch North	Armed conflict Drought Floods Hunger Epidemics	Local conflict Domestic violence Violence against women Seasonal road access Crop disease Livestock disease	1 of 2	1 of 2	2 of 2
Toch West	Drought Hunger	Crop disease Livestock disease	0 of 2	1 of 2	2 of 2

COUNTY PROFILE

GOGRIAL WEST, WARRAP

County Population Information



Current (2012) Population
(Source: Est. from NBS)

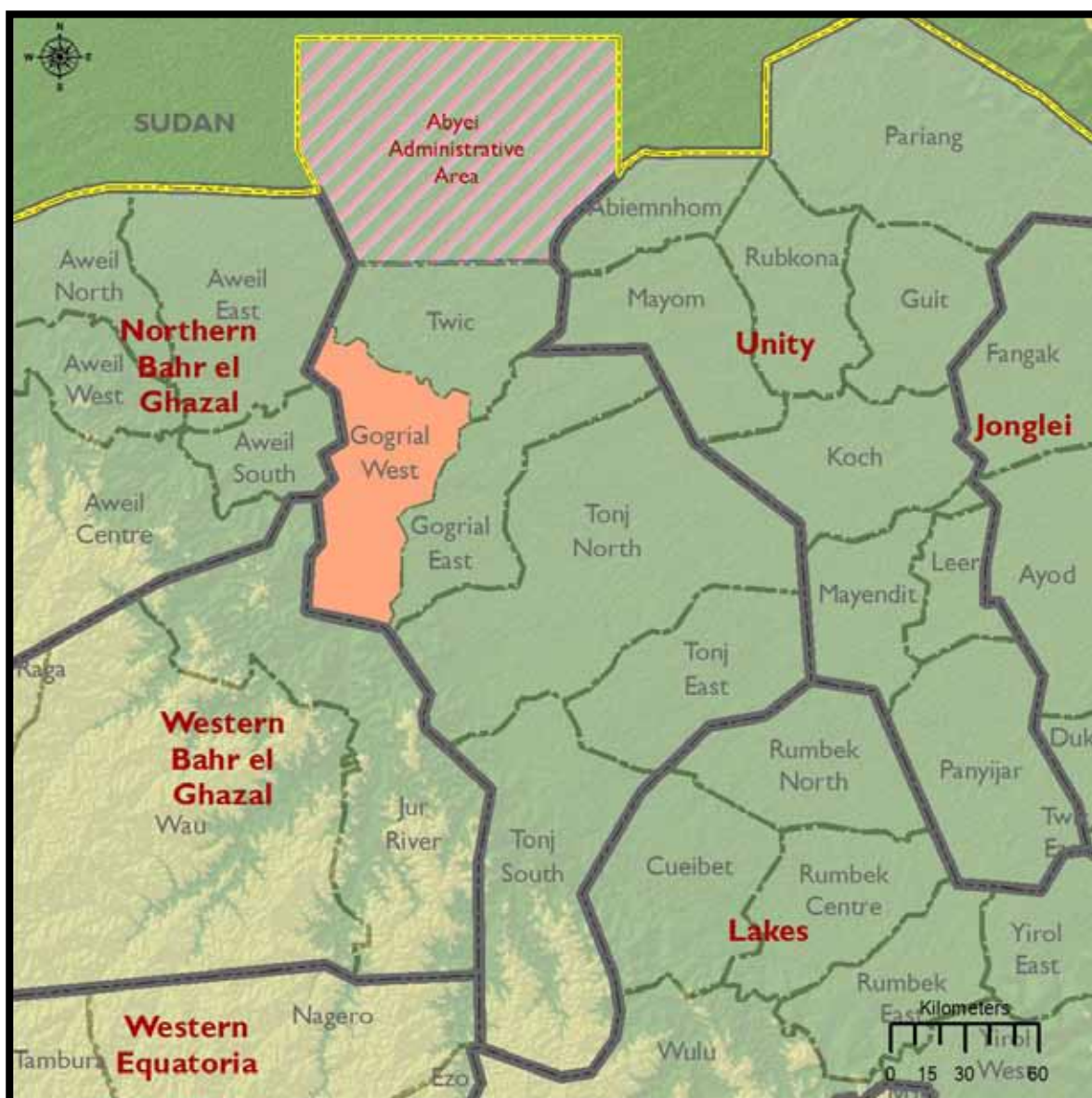
270,631

Returnees, Feb 2007-Dec 2012
(Source: IOM)

38,429

Ratio of Returnees to
Population

14.20%



Payams & Bomas		
Payam	Boma	Number of Villages
Akon	Ayien	7
	Malek Agal	7
	Rup	7
Akon North	Ameth	7
	Mabil	7
Alek North	Makuach	7
	Malek Ngok	7
	Mankuch	7
Alek South	Ameeth	7
Alek West	Atukuel	7
	Malual-Bull	7
	Ngap Athian	7
	Alueth	7
	Maper	7
	Nyok Thiang	7
Gogrial	Malual Anquei But	7
	Maluil Ajak	7
	Mandeng	7
Kuac North	Angui	7
	Luk Luk	6
	Monyjoch	5
Kuac South	Dong	7
	Warkou	7
	Wunkuel dit	7
	Wunkuel thii	7
Riau	Adeer	7
	Anguoth	7
	Kuel	7

Demographic Indicators of Respondents & Land Status

Payam	Main Tribes	Main Languages	Average Household Size (persons)	Main Settlement Types	Main Land Ownerships	Presence of Mines/UXO per Boma
Akon	Dinka	Dinka	Max 13 Min 7	Permanent Temporary	Communal Ancestral	0 of 3
Akon North	Dinka	Dinka	Max 10 Min 6	Permanent	Ancestral	0 of 2
Alek North	Dinka	Dinka	Max 14 Min 6	Permanent	Communal Ancestral	0 of 3
Alek South	Dinka	Dinka	Max 11 Min 4	Permanent	Individual Communal	0 of 4
Alek West	Dinka	Dinka Dinka (tho)	Max 10 Min 5	Temporary	Ancestral	0 of 3
Gogrial	Dinka	Dinka	Max 13 Min 6	Permanent Temporary Nomadic	Communal Ancestral	1 of 3
Kuac North	Dinka	Dinka	Max 12 Min 5	Temporary	Individual Communal Ancestral	0 of 3
Kuac South	Dinka	Dinka	Max 13 Min 5	Permanent Temporary	Communal Ancestral	0 of 4
Riau	Dinka	Dinka	Max 13 Min 4	Permanent Temporary	Communal Ancestral	0 of 3

LIVELIHOODS (BQ 2012)

Agricultural Practices & Challenges

Payam	Bomas Engaged in Farming	Food Crops Grown	Production Needs	Major Problems
Akon	3 of 3	Maize Sorghum Sesame Groundnuts Vegetables	Seed Tools Fertilizers Training Tractor Ox plough	Crop disease Other crop damage Natural disaster
Akon North	2 of 2	Maize Sorghum Sesame Groundnuts Millet	Seed Tools Training Tractor Ox plough	Crop disease Other crop damage Natural disaster
Alek North	3 of 3	Maize Sorghum Sesame Groundnuts Millet	Seed Tools Fertilizers Training Tractor Compost fertilizers Ox plough	Crop disease Other crop damage Natural disaster
Alek South	4 of 4	Maize Sorghum Sesame Groundnuts Millet Other	Seed Tools Training Tractor Ox plough Irrigation equipment	Crop disease Other crop damage Market accessibility Natural disaster
Alek West	2 of 3	Maize Sorghum Sesame Groundnuts Vegetables Millet Cassava	Tools Labor Training Compost fertilizers Ox plough	Crop disease Other crop damage Market accessibility Natural disaster
Gogrial	3 of 3	Maize Sorghum Sesame Groundnuts	Seed Tools Training Other Tractor Ox plough	Crop disease Other crop damage Market accessibility Natural disaster
Kuac North	3 of 3	Maize Sorghum Sesame Groundnuts Vegetables	Seed Tools Training Tractor Ox plough	Crop disease Other crop damage Market accessibility Natural disaster
Kuac South	4 of 4	Sorghum Sesame Groundnuts	Seed Tools Training Tractor Ox plough	Crop disease Other crop damage Market accessibility Conflict Natural disaster
Riau	3 of 3	Maize Sorghum Sesame Groundnuts Vegetables Millet Other	Seed Tools Fertilizers Training Tractor Ox plough	Crop disease Other crop damage Market accessibility Natural disaster

Pastoralist Practices, Challenges & Market Access

Payam	Bomas Engaged in Livestock	Primary Livestock	Bomas with Livestock Market	Major Problems
Akon	3 of 3	Cattle Sheep Goats Other	1 of 3	Grazing land Diseases Water Drought/Floods
Akon North	2 of 2	Cattle Sheep Goats Other	1 of 2	Grazing land Diseases Water Conflict Drought/Floods
Alek North	3 of 3	Cattle Sheep Goats Other	1 of 3	Grazing land Diseases Water Drought/Floods
Alek South	4 of 4	Cattle Sheep Goats Other	2 of 4	Grazing land Diseases Water Drought/Floods
Alek West	2 of 3	Cattle Sheep Goats Other	3 of 3	Grazing land Diseases Water Market facilities Drought/Floods
Gogrial	3 of 3	Cattle Sheep Goats Other	1 of 3	Grazing land Diseases Water Market facilities Drought/Floods
Kuac North	3 of 3	Cattle Sheep Goats Other	1 of 3	Grazing land Diseases Water Drought/Floods
Kuac South	4 of 4	Cattle Sheep Goats Other	3 of 4	Diseases Water Market facilities Drought/Floods
Riau	3 of 3	Cattle Sheep Goats Other	1 of 3	Grazing land Diseases Water Market facilities Conflict Drought/Floods

Fishing Practices, Challenges & Alternate Means of Income

Payam	Bomas Engaged in Fisheries	Major Problems	Other Means of Income
Akon	2 of 3	Lack of inputs Drought/Floods Storage facility Market facility Conflict	Income generating activities
Akon North	2 of 2	Lack of inputs	Employment Income generating activities Remittance Other
Alek North	1 of 3	Storage facility	Employment Income generating activities Remittance
Alek South	1 of 4	Lack of inputs Drought/Floods Storage facility Market facility	Employment Income generating activities
Alek West	2 of 3	Drought/Floods Market facility	Income generating activities Remittance
Gogrial	2 of 3	Lack of inputs Drought/Floods Storage facility Market facility	Income generating activities
Kuac North	2 of 3	Lack of inputs Drought/Floods Market facility	Employment Income generating activities Remittance
Kuac South	3 of 4	Lack of inputs Drought/Floods Storage facility Market facility	Employment Pension Income generating activities
Riau	2 of 3	None	Income generating activities Remittance

Shocks & Coping Mechanisms

Payam	Period of Scarcity	Coping with Scarcity	Shocks in Past 2 Years	Coping with Shocks
Akon	Feb – Aug	Reduced meals Forest fruits and vegetables Other	Drought Floods Disease Human epidemic Crop disease	Migrate Take loan Sell livestock
Akon North	July – Aug	Forest fruits and vegetables Food aid	Drought Floods Disease Crop disease Other	Sell livestock Food from forest
Alek North	April – Aug	Reduced meals Forest fruits and vegetables Other	Drought Disease Human epidemic Pests	Wait for assistance Migrate Flee IGA
Alek South	March – May	Reduced meals Forest fruits and vegetables Temporary migration Other	Drought Disease Human epidemic Crop disease	Sell livestock
Alek West	April – Sept	Loans Reduced meals	Drought Disease Crop disease	Wait for assistance Sell livestock
Gogrial	May – Sept	Reduced meals Forest fruits and vegetables Other	Drought Disease Crop disease	Wait for assistance Sell livestock Other
Kuac North	Feb – Aug	Reduced meals Forest fruits and vegetables Other	Drought Disease Human epidemic Crop disease Pests Other	Wait for assistance Sell livestock
Kuac South	March – Sept	Reduced meals Cash benefits Forest fruits and vegetables Temporary migration Extended family support Other	Drought Floods Disease Human epidemic Crop disease Pests Conflict	Wait for assistance Migrate Take loan Sell livestock Other
Riau	April – Aug	Reduced meals Forest fruits and vegetables Temporary migration Other	Drought Floods Disease Human epidemic Crop disease Pests Conflict	Wait for assistance Sell livestock Flee Seek support Other

HEALTH (BQ 2012 & HEALTH TECHNICAL)

Health Facilities by Type, Attendance & Availability of Trained Personnel

Payam	Hospitals	PHCCs	PHCUs	Bomas w/Facilities	Ave. Annual Facility Attendance ^[1]	Bomas w/Doctor	Bomas w/MCHW	Bomas w/Nurse
Akon	0	1	0	1 of 3	-	0 of 1	0 of 1	0 of 1
Akon North	0	0	1	1 of 2	1,486	0 of 1	1 of 1	0 of 1
Alek North	-	-	-	0 of 3	-	-	-	-
Alek South	0	0	2	2 of 4	1,486	0 of 2	0 of 2	1 of 2
Alek West	0	0	3	2 of 3	4,467	0 of 3	0 of 3	2 of 3
Gogrial	0	1	2	2 of 3	589	1 of 3	0 of 3	2 of 3
Kuac North	0	0	1	1 of 3	536	0 of 1	0 of 1	1 of 1
Kuac South	0	0	2	2 of 4	-	0 of 2	0 of 2	1 of 2
Riau	0	1	2	1 of 3	2,522	0 of 3	1 of 3	1 of 3

^[1] Mean average facility attendance covers facility reported patient intake for 2009-2011.

Health Awareness Raising Activities & Epidemiological Indicators

Payam	Bomas with Education Awareness on HIV/AIDS (Source: BQ)	Facility Conducts Immunization	Top Illness U5s	Past Outbreak	Likely Outbreak
Akon	0 of 3	0 of 1	Malaria Pneumonia Acute respiratory infection	Measles	Diarrhea Other
Akon North	2 of 2	1 of 1	Malaria Pneumonia Diarrhea Measles	None	Cholera Measles Meningitis
Alek North	0 of 3	-	Malaria Pneumonia	None	Cholera Measles
Alek South	0 of 3	2 of 2	Malaria	Cholera	Cholera Yellow fever
Alek West	1 of 3	2 of 3	Malaria	None	Cholera Measles
Gogrial	1 of 3	3 of 3	Malaria Pneumonia Diarrhea Worm parasite	None	Cholera Measles Meningitis Diarrhea Other
Kuac North	1 of 3	1 of 1	Malaria	None	Cholera Measles Yellow fever
Kuac South	4 of 4	2 of 2	Malaria Pneumonia	Meningitis Measles	Cholera Malaria Other
Riau	0 of 3	0 of 3	Malaria Diarrhea	Cholera Measles	Cholera Measles Meningitis Malaria Other

WATER & SANITATION (BQ 2012)

Water Accessibility, Migration & Conflict

Payam	Most Year-Round Accessible Source	Water Accessible to All per Boma	Seasonal Migration	Conflict on Migration Route Due to Competition for Water per Boma	Local Water Conflicts per Boma
Akon	River Borehole Hafir	0 of 3	Jan – June	1 of 3	0 of 3
Akon North	River Stream Spring Borehole Lakepond	0 of 2	Dec – April	0 of 2	0 of 2
Alek North	River Borehole	0 of 3	Jan – June	0 of 3	1 of 3
Alek South	River Borehole	0 of 4	Jan – Dec	0 of 4	4 of 4
Alek West	Borehole	2 of 3	None	0 of 3	0 of 3
Gogrial	River Borehole	0 of 3	Jan – June	0 of 3	1 of 3
Kuac North	None	0 of 3	Year Round	0 of 3	0 of 3
Kuac South	Borehole	0 of 4	Jan – May	2 of 4	2 of 4
Riau	Borehole	0 of 3	Jan – June	0 of 3	1 of 3

GOGRIAL EAST, WARRAP

Sanitation Facilities & Hygiene Education

Payam	Most Common Latrine Type	Bomas with Hygiene Education in Past 2 Years
Akon	Public simple pit	2 of 3
Akon North	None	1 of 2
Alek North	Household simple toilet	1 of 3
Alek South	Public simple pit Public ventilated pit Public flush toilets	0 of 4
Alek West	None	0 of 3
Gogrial	Public ventilated pit	2 of 3
Kuac North	None	3 of 3
Kuac South	None	2 of 4
Riau	None	0 of 3

EDUCATION (BQ 2012 & EDUCATION TECHNICAL)

School Availability by Grade, Curriculum & Estimated Attendance Rate

Payam	Schools <S4	Schools =S4	Schools <S6	Schools <S8	Curriculums	% Attending ^[1]	% Girls Attending
Akon	0	6	6	5	Uganda New S. Sudan	42%	95%
Akon North	0	3	5	1	Old Sudana New S. Sudan	25%	95%
Alek North	0	2	1	1	New S. Sudan	95%	75%
Alek South	0	1	6	5	New S. Sudan	37%	69%
Alek West	0	1	2	2	New S. Sudan	25%	95%
Gogrial	0	3	4	3	Old Sudana New S. Sudan	25%	62%
Kuac North	2	1	1	2	New S. Sudan	95%	100%
Kuac South	0	0	5	2	New S. Sudan	100%	100%
Riau	0	3	2	3	New S. Sudan	95%	25%

^[1]Source: BQ 2012.

Causes of School Dropout & Needs

Payam	Boys Reasons for Dropping Out	Girls Reasons for Dropping Out	Bomas with School	Most urgent needs ^[2]
Akon	School fees Distance Family decision Migration Other	Distance Early marriage Family decision Migration Other	3 of 3	Trained teachers Additional classes
Akon North	Distance Family decision Migration Other	Distance Early marriage Family decision Migration	2 of 2	Trained teachers
Alek North	Distance Family decision Migration Other	Distance Early marriage Family decision Migration Other	3 of 3	Additional classes
Alek South	School fees Distance Family decision Migration Other	School fees Distance Early marriage Family decision Migration Other	4 of 4	Trained teachers Additional classes
Alek West	Distance Family decision	Early marriage Family decision	3 of 3	Trained teachers Additional classes
Gogrial	Distance Family decision Migration Other	Distance Early marriage Family decision Migration Other	3 of 3	Structural maintenance Additional classes
Kuac North	Distance Family decision Migration Other	Distance Early marriage Family decision Other	3 of 3	Trained teachers Additional classes
Kuac South	Distance Family decision Migration Other	Distance Early marriage Family decision Migration Other	4 of 4	Other
Riau	School fees Distance Language Family decision Migration Other	School fees Distance Language Early marriage Family decision Other	3 of 3	Additional classes Books

^[2] Source: BQ 2012.

PROTECTION (BQ 2012)

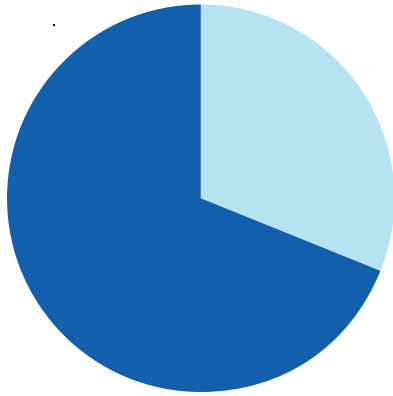
Internal & External Threats & Availability of Rule of Law Institutions

Payam	External Threat	Internal Threat	Women Feel Unsafe per Boma	Bomas with Police Station	Bomas with Traditional Court
Akon	Drought Floods Hunger Epidemics	Crop disease Livestock disease	0 of 3	2 of 3	3 of 3
Akon North	Armed conflict Drought Floods Hunger Epidemics	Local conflict Domestic violence Violence against women Seasonal road access Crop disease Livestock disease	1 of 2	2 of 2	2 of 2
Alek North	Drought Hunger Epidemics	Crop disease Livestock disease	0 of 3	1 of 3	3 of 3
Alek South	Drought Floods Hunger Epidemics	Local conflict Violence against women Crop disease Livestock disease	3 of 4	4 of 4	4 of 4
Alek West	Armed conflict Drought Floods Hunger Epidemics	Domestic violence Seasonal road access Crop disease Livestock disease	0 of 3	3 of 3	2 of 3
Gogrial	Drought Hunger Epidemics	Seasonal road access Crop disease Livestock disease	2 of 3	2 of 3	3 of 3
Kuac North	Drought Hunger Epidemics	Local conflict Crop disease Livestock disease	0 of 3	2 of 3	3 of 3
Kuac South	Armed conflict Drought Floods Hunger Epidemics	Local conflict Violence against women Seasonal road access Crop disease Livestock disease	4 of 4	3 of 4	4 of 4
Riau	Armed conflict Drought Floods Hunger Epidemics	Seasonal road access Crop disease Livestock disease	1 of 3	2 of 3	3 of 3

COUNTY PROFILE

TONJ NORTH, WARRAP

County Population Information



Current (2012) Population
(Source: Est. from NBS)

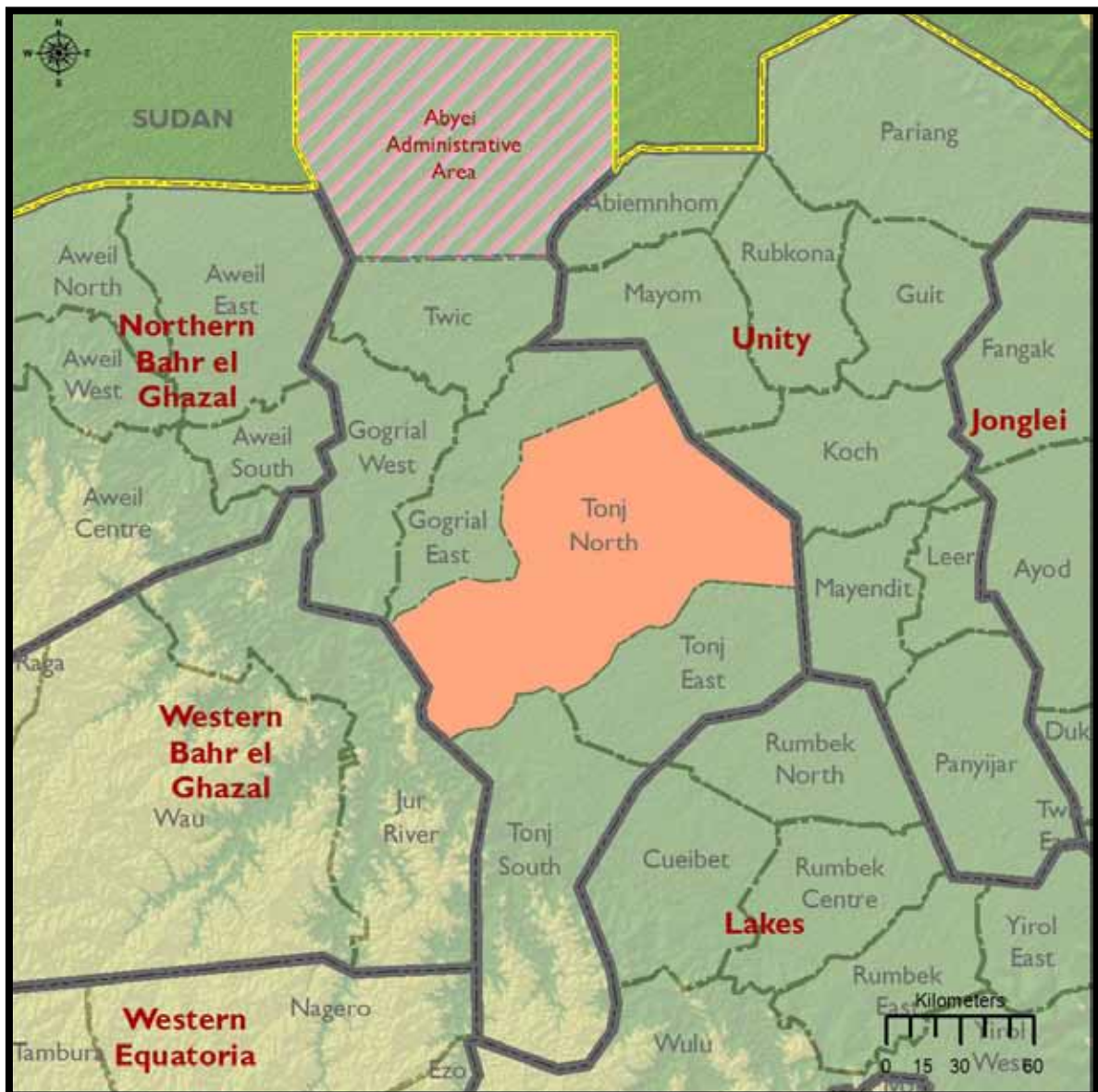
183,314

Returnees, Feb 2007-Dec 2012
(Source: IOM)

18,998

Ratio of Returnees to
Population

10.36%



TONJ NORTH, WARRAP

Payams & Bomas		
Payam	Boma	Number of Villages
Akop	Achuol-Lok	7
	Athieng Puol	5
	Konduk	5
	Maguen	4
Alabet	Aru	3
	Lang kap	5
	Mading	4
	Majak	5
Aliek	Malok	4
	Abilnyang	4
	Patei	7
	Rorkou	4
Awul	Ageny	7
	Angon	7
	Aporlang	4
	Awul	7
	Kuanygoi	6
	Lou-Noi	7
	Pagak Dit	6
Kirik	Achiir	-
	Kuelabei	4
	LietNhom	5
	Madhiath	7
	Manyiel	5
	Pabukchak	5

Payams & Bomas		
Payam	Boma	Number of Villages
Manalor	Agak Ker	5
	Akur Biok	4
	Aru Abien	4
	Mathiang	4
	Pakot	4
	Paraksika	6
Marial Lou	Adau	8
	Agawei	4
	Gormook	4
Pagol	Puolbar	7
	Lurchuk	4
	Majok	6
Rual Bet	Mayen-Loc	7
	Achol	5
	Aduany	3
	Akoi	3
	Kuanyiel	4
	Malou	5

Demographic Indicators of Respondents & Land Status

Payam	Main Tribes	Main Languages	Average Household Size (persons)	Main Settlement Types	Main Land Ownerships	Presence of Mines/UXO per Boma
Akop	Dinka	Dinka	Max 12 Min 7	Permanent Seasonal Temporary Nomadic	Communal Ancestral	0 of 4
Alabet	Dinka	Dinka	Max 11 Min 6	Permanent Seasonal Nomadic	Communal Ancestral	0 of 5
Aliek	Dinka	Dinka	Max 12 Min 6	Permanent Seasonal Temporary Nomadic	Communal Ancestral	0 of 3
Awul	Dinka	Dinka	Max 9 Min 5	Permanent Nomadic	Communal Ancestral	0 of 7
Kirik	Dinka	Dinka	Max 12 Min 7	Permanent Temporary Nomadic	Communal Ancestral	0 of 6
Manalor	Dinka	Dinka	Max 13 Min 9	Permanent Nomadic	Communal Ancestral	0 of 6
Marial Lou	Dinka	Dinka	Max 9 Min 7	Permanent Nomadic	Communal Ancestral	0 of 4
Pagol	Dinka	Dinka Arabic	Max 9 Min 5	Permanent Nomadic	Communal Ancestral	1 of 3
Rual Bet	Dinka	Dinka	Max 11 Min 5	Permanent Nomadic	Communal Ancestral	0 of 5

LIVELIHOODS (BQ 2012)

Agricultural Practices & Challenges

Payam	Bomas Engaged in Farming	Food Crops Grown	Production Needs	Major Problems
Akop	4 of 4	Maize Sorghum Sesame Groundnuts Other	Seed Tools Training Other Tractor Ox plough	Crop disease Other crop damage Market accessibility Conflict Natural disaster
Alabet	5 of 5	Maize Sorghum Sesame Groundnuts Vegetables	Seed Tools Fertilizers Training Tractor Compost fertilizers Ox plough Irrigation equipment	Crop disease Other crop damage Market accessibility Conflict Natural disaster
Aliek	3 of 3	Maize Sorghum Sesame Groundnuts	Seed Tools Training Tractor Ox plough	Crop disease Other crop damage Market accessibility Natural disaster
Awul	7 of 7	Maize Sorghum Sesame Groundnuts Vegetables Millet Other	Seed Tools Other Ox plough	Crop disease Other crop damage Market accessibility Natural disaster
Kirik	6 of 6	Maize Sorghum Sesame Groundnuts Vegetables Millet Other	Seed Tools Fertilizers Training Tractor Ox plough	Crop disease Other crop damage Conflict Natural disaster
Manalar	6 of 6	Maize Sorghum Sesame Groundnuts	Seed Tools Tractor Ox plough	Crop disease Other crop damage Market accessibility Natural disaster

(Agricultural Practices & Challenges Continued)

Marial Lou	4 of 4	Maize Sorghum Sesame Groundnuts	Seed Tools Labor Training Tractor Ox plough	Crop disease Other crop damage Market accessibility Conflict Natural disaster
Pagol	3 of 3	Maize Sorghum Sesame Groundnuts Vegetables Millet Other	Seed Tools Fertilizers Training Other Tractor Compost fertilizers Ox plough	Crop disease Other crop damage Market accessibility Natural disaster
Rual Bet	5 of 5	Maize Sorghum Sesame Groundnuts Other	Seed Tools Fertilizers Tractor Ox plough	Crop disease Other crop damage Market accessibility Conflict Natural disaster

Pastoralist Practices, Challenges & Market Access

Payam	Bomas Engaged in Livestock	Primary Livestock	Bomas with Livestock Market	Major Problems
Akop	4 of 4	Cattle Sheep Goats Other	1 of 4	Grazing land Diseases Water Market facilities Conflict
Alabet	5 of 5	Cattle Sheep Goats Other	1 of 5	Grazing land Diseases Water Conflict Drought/Floods
Aliek	3 of 3	Cattle Sheep Goats Other	1 of 3	Grazing land Diseases Water Market facilities Conflict Drought/Floods
Awul	7 of 7	Cattle Sheep Goats Other	1 of 7	Grazing land Diseases Water
Kirik	6 of 6	Cattle Sheep Goats Other	1 of 6	Grazing land Diseases Water Conflict Drought/Floods
Manalor	6 of 6	Cattle Sheep Goats Other	2 of 6	Grazing land Diseases Water Drought/Floods
Marial Lou	4 of 4	Cattle Sheep Goats	1 of 4	Grazing land Diseases Water Conflict Drought/Floods
Pagol	3 of 3	Cattle Sheep Goats Other	2 of 3	Grazing land Diseases Water Market facilities Drought/Floods
Rual Bet	5 of 5	Cattle Sheep Goats	1 of 5	Grazing land Diseases Water Conflict Drought/Floods

Fishing Practices, Challenges & Alternate Means of Income

Payam	Bomas Engaged in Fisheries	Major Problems	Other Means of Income
Akop	4 of 4	Lack of inputs Droughts/floods Storage facility Market facility Conflict Other	Employment Income generating activities Other
Alabet	5 of 5	Lack of inputs Droughts/floods Conflict	Income generating activities
Aliek	3 of 3	Lack of inputs Droughts/floods Storage facility Conflict	Income generating activities Other
Awul	2 of 7	Lack of inputs Market facility	Employment Income generating activities Other
Kirik	1 of 6	Lack of inputs	Income generating activities Other
Manalor	0 of 6	None	Income generating activities
Marial Lou	0 of 4	None	Income generating activities
Pagol	1 of 3	Lack of inputs Droughts/floods Other	Income generating activities Other
Rual Bet	0 of 5	None	Income generating activities

Shocks & Coping Mechanisms

Payam	Period of Scarcity	Coping with Scarcity	Shocks in Past 2 Years	Coping with Shocks
Akop	March – Aug	Reduced meals Forest fruit and vegetables Extended family support Food aid Other	Drought Disease Human epidemic Crop disease Pests Conflict Other	Wait for assistance Migrate Sell livestock Seek support
Alabet	March – Sept	Forest fruit and vegetables	Drought Floods Crop disease	Wait for assistance Sell livestock
Aliek	May – Aug	Reduced meals Forest fruit and vegetables Extended family support Other	Drought Disease Crop disease Pests Conflict	Wait for assistance Migrate Sell livestock
Awul	Feb – Sept	Forest fruit and vegetables Temporary migration Other	Drought Disease Crop disease Pests Other	Migrate Sell livestock
Kirik	April – Aug	Forest fruit and vegetables Food aid Other	Drought Disease Human epidemic Crop disease Pests Conflict Other	Wait for assistance Migrate Sell livestock Seek support Fight back
Manalor	March – Aug	Reduced meals Cash benefits Forest fruit and vegetables	Disease Human epidemic	Wait for assistance
Marial Lou	Feb – Aug	Forest fruit and vegetables Food aid	Drought Floods Disease Crop disease Conflict	Wait for assistance Sell livestock
Pagol	May – Aug	Reduced meals Forest fruit and vegetables Temporary migration Food aid Other	Drought Disease Human epidemic Crop disease Conflict Other	Wait for assistance Migrate Sell livestock
Rual Bet	March – Aug	Loans Reduced meals Forest fruit and vegetables Temporary migration	Drought Disease Conflict	Wait for assistance

HEALTH (BQ 2012 & HEALTH TECHNICAL)

Health Facilities by Type, Attendance & Availability of Trained Personnel

Payam	Hospitals	PHCCs	PHCUs	Bomas w/Facilities	Ave. Annual Facility Attendance ^[1]	Bomas w/Doctor	Bomas w/MCHW	Bomas w/Nurse
Akop	0	1	0	1 of 4	-	0 of 1	0 of 4	1 of 4
Alabet	0	1	0	1 of 5	1,866	0 of 1	0 of 5	0 of 5
Aliek	0	1	0	1 of 3	1,869	0 of 1	0 of 3	0 of 3
Awul	0	1	3	4 of 7	1,293	0 of 4	0 of 7	2 of 7
Kirik	0	0	3	3 of 6	1,220	0 of 3	1 of 6	1 of 6
Manalor	0	0	2	2 of 6	1,549	0 of 2	0 of 6	0 of 6
Marial Lou	2	0	0	1 of 4	31	2 of 2	0 of 4	1 of 4
Pagol	0	0	2	3 of 3	1,200	0 of 2	0 of 3	0 of 3
Rual Bet	-	-	-	1 of 5	-	-	-	-

^[1] Mean average facility attendance covers facility reported patient intake for 2009-2011.

Health Awareness Raising Activities & Epidemiological Indicators

Payam	Bomas with Education Awareness on HIV/AIDS (Source: BQ)	Facility Conducts Immunization	Top Illness U5s	Past Outbreak	Likely Outbreak
Akop	1 of 4	1 of 1	Malaria Pneumonia	Measles	Measles
Alabet	1 of 5	1 of 1	Malaria Diarrhea	Measles	Measles
Aliek	1 of 3	1 of 1	Malaria	Measles	Whooping cough Other
Awul	2 of 7	4 of 4	Malaria	Measles Meningitis	Measles Meningitis Whooping cough Other
Kirik	0 of 5	2 of 3	Malaria	Cholera Meningitis Malaria	Cholera Measles Meningitis Yellow fever
Manalor	0 of 6	2 of 2	Malaria Measles	Measles Meningitis	Measles
Marial Lou	4 of 4	1 of 2	Malaria Diarrhea	None	None
Pagol	2 of 3	1 of 2	Malaria Diarrhea Measles	None	None
Rual Bet	1 of 4	-	-	-	-

WATER & SANITATION (BQ 2012)

Water Accessibility, Migration & Conflict

Payam	Most Year-Round Accessible Source	Water Accessible to All per Boma	Seasonal Migration	Conflict on Migration Route Due to Competition for Water per Boma	Local Water Conflicts per Boma
Akop	None	1 of 4	Dec – May	0 of 4	3 of 4
Alabet	None	0 of 5	Dec – May	0 of 5	5 of 5
Aliek	None	1 of 3	Dec – May	0 of 3	1 of 3
Awul	None	1 of 7	Dec – Nov	1 of 7	5 of 7
Kirik	Borehole	0 of 6	Year round	1 of 6	6 of 6
Manalor	None	0 of 6	Jan – April	0 of 6	6 of 6
Marial Lou	Borehole	1 of 4	Dec – May	4 of 4	3 of 4
Pagol	River Borehole	0 of 3	Dec – May	2 of 3	3 of 3
Rual Bet	Borehole	0 of 5	Jan – May	0 of 5	4 of 5

Sanitation Facilities & Hygiene Education

Payam	Most Common Latrine Type	Bomas with Hygiene Education in Past 2 Years
Akop	Public ventilated pit	1 of 4
Alabet	None	0 of 5
Aliek	None	0 of 3
Awul	None	2 of 7
Kirik	None	1 of 6
Manalor	None	0 of 6
Marial Lou	None	2 of 4
Pagol	None	1 of 3
Rual Bet	None	3 of 5

EDUCATION (BQ 2012 & EDUCATION TECHNICAL)

School Availability by Grade, Curriculum & Estimated Attendance Rate

Payam	Schools <S4	Schools =S4	Schools <S6	Schools <S8	Curriculums	% Attending ^[1]	% Girls Attending
Akop	2	2	0	0	Uganda New S. Sudan	62%	75%
Alabet	1	0	3	0	Uganda New S. Sudan	97%	75%
Aliek	1	2	0	1	New S. Sudan	58%	67%
Awul	0	3	2	2	New S. Sudan	95%	75%
Kirik	0	5	2	1	New S. Sudan	42%	67%
Manalor	0	2	3	1	Kenya Uganda New S. Sudan	95%	67%
Marial Lou	2	1	0	1	New S. Sudan	25%	75%
Pagol	1	1	2	1	New S. Sudan	62%	75%
Rual Bet	1	3	1	0	Kenya New S. Sudan	94%	75%

^[1] Source: BQ 2012.

Causes of School Dropout & Urgent Needs

Payam	Boys Reasons for Dropping Out	Girls Reasons for Dropping Out	Bomas with School	Most urgent needs ^[2]
Akop	Distance Conflict Family decision Migration Other	Distance Conflict Early marriage Family decision Migration Other	2 of 4	Trained teachers Additional classes
Alabet	Distance Conflict Family decision Other	Distance Conflict Early marriage Family decision	4 of 5	Trained teachers School feeding
Aliek	School fees Distance Family decision Other	Distance Early marriage Family decision Other	2 of 3	Additional classes Other
Awul	School fees Distance Family decision Migration Other	School fees Distance Early marriage Family decision Migration Other	7 of 7	School feeding Other
Kirik	Distance Family decision Other	Distance Conflict Early marriage Family decision Other	6 of 6	Trained teachers Additional classes School furniture Potable water Other
Manalor	School fees Distance Family decision Migration Other	Distance Early marriage Migration Other	6 of 6	Trained teachers School feeding
Marial Lou	Distance Conflict Family decision Migration Other	Distance Conflict Early marriage Family decision Migration Other	4 of 4	Trained teachers School furniture
Pagol	Distance Family decision Migration Other	Distance Early marriage Family decision Other	3 of 3	Trained teachers Additional classes School feeding
Rual Bet	Distance Conflict Family decision Other	Distance Conflict Family decision Other	5 of 5	Trained teachers Additional classes

^[2] Source: BQ 2012.

PROTECTION (BQ 2012)

Internal & External Threats & Availability of Rule of Law Institutions

Payam	External Threat	Internal Threat	Women Feel Unsafe per Boma	Bomas with Police Station	Bomas with Traditional Court
Akop	Armed conflict Drought Floods Hunger Epidemics	Domestic violence Violence against women Seasonal road access Crop disease Livestock disease	1 of 4	3 of 4	4 of 4
Alabet	Armed conflict Floods Hunger Epidemics	Domestic violence Crop disease Livestock disease	0 of 5	3 of 5	5 of 5
Aliek	Armed conflict Drought Hunger Epidemics	Domestic violence Violence against women Seasonal road access Crop disease Livestock disease	2 of 3	3 of 3	3 of 3
Awul	Drought Floods Hunger	Domestic violence Violence against women Crop disease Livestock disease	5 of 7	2 of 7	7 of 7
Kirik	Armed conflict Drought Hunger Epidemics	Domestic violence Violence against women Seasonal road access Crop disease Livestock disease	3 of 6	3 of 6	6 of 6
Manalor	Drought Hunger Epidemics	Domestic violence Violence against women Crop disease Livestock disease	2 of 6	2 of 6	6 of 6

TONJ NORTH, WARRAP

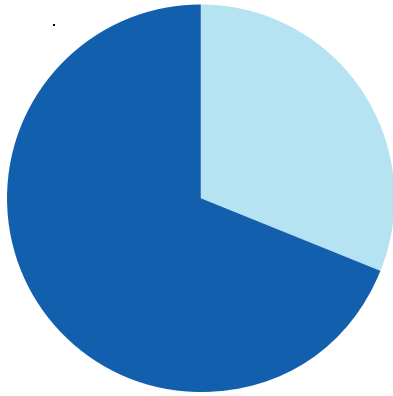
(Internal & External Threats & Availability of Rule of Law Institutions continued)

Payam	External Threat	Internal Threat	Women Feel Unsafe per Boma	Bomas with Police Station	Bomas with Traditional Court
Marial Lou	Armed conflict Drought Floods Hunger Epidemics	Local conflict Domestic violence Violence against women Crop disease Livestock disease	2 of 4	4 of 4	4 of 4
Pagol	Armed conflict Drought Hunger Epidemics	Domestic violence Crop disease Livestock disease	1 of 3	2 of 3	3 of 3
Rual Bet	Armed conflict Drought Hunger	Local conflict Domestic violence Violence against women Crop disease Livestock disease	1 of 5	1 of 5	5 of 5

COUNTY PROFILE

TWIC, WARRAP

County Population Information



Current (2012) Population
(Source: Est. from NBS)

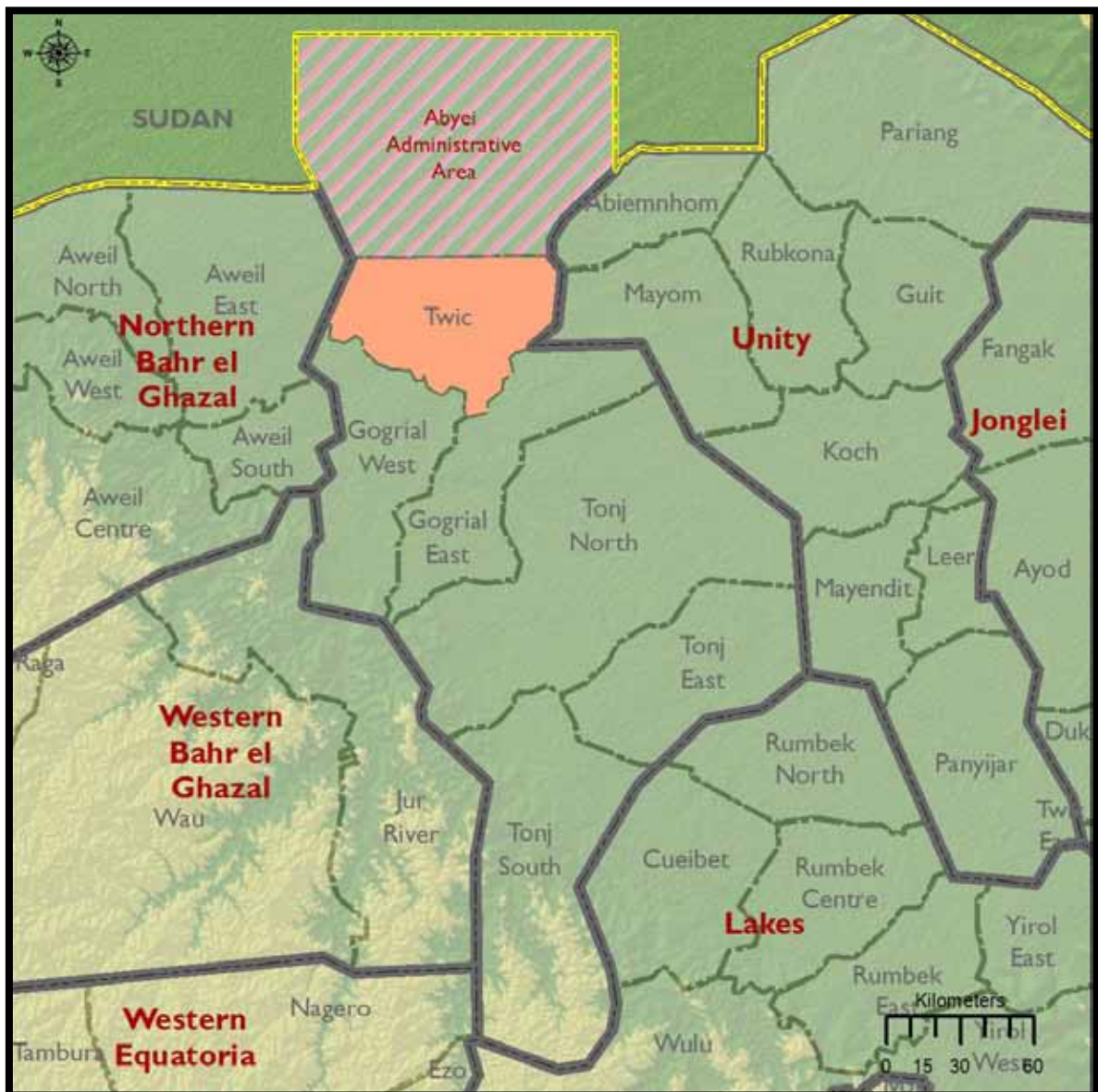
227,343

Returnees, Feb 2007-Dec 2012
(Source: IOM)

59,648

Ratio of Returnees to
Population

26.24%



TWIC, WARRAP

Payams & Bomas		
Payam	Boma	Number of Villages
Ajak Kuac	Biem Nhom	7
	Marial	5
	Mol-Bang	7
Akoc	Tiit	7
	Wuncuei	7
	Yiik	7
Aweng	Bulyom	5
	Majook Noon	7
	Maper	7
	Pagai Anyuon	7
Panyok	Akak	7
	Mading Luit	7
	Majak Pagai	7
	Tuele	7
Turalei	Ayien Awuol	7
	Mangok	6
	Nyiel Abiel	5
Wunrok	Ajong	7
	Awiel Giek	6
	Kurum	7
	Tiit Cok	7

Demographic Indicators of Respondents & Land Status

Payam	Main Tribes	Main Languages	Average Household Size (persons)	Main Settlement Types	Main Land Ownerships	Presence of Mines/UXO per Boma
Ajak Kuac	Dinka	Dinka Arabic	Max 13 Min 5	Permanent Temporary	Communal Ancestral	1 of 3
Akoc	Dinka	Dinka	Max 16 Min 7	Permanent	Communal Ancestral	0 of 3
Aweng	Dinka	Dinka	Max 16 Min 5	Permanent Temporary	Communal Ancestral	1 of 4
Panyok	Dinka	Dinka	Max 13 Min 5	Permanent	Ancestral	0 of 4
Turalei	Dinka	Dinka	Max 10 Min 5	Temporary	Communal Ancestral	0 of 4
Wunrok	Dinka	Dinka	Max 10 Min 5	Permanent	Communal Ancestral	0 of 4

LIVELIHOODS (BQ 2012)

Agricultural Practices & Challenges

Payam	Bomas Engaged in Farming	Food Crops Grown	Production Needs	Major Problems
Ajak Kuac	3 of 3	Maize Sorghum Sesame Groundnuts Other	Seed Tools Training Tractor Ox plough	Crop disease Other crop damage Market accessibility Conflict Natural disaster
Akoc	3 of 3	Maize Sorghum Sesame Other	Seed Tools Training Tractor Compost fertilizers Ox plough	Crop disease Other crop damage Market accessibility Conflict
Aweng	4 of 4	Maize Sorghum Sesame Groundnuts Vegetables Millet Cassava Other	Seed Tools Fertilizers Training Tractor Compost fertilizers Ox plough	Crop disease Other crop damage Market accessibility Conflict Natural disaster
Panyok	4 of 4	Maize Sorghum Sesame Groundnuts Vegetables	Seed Tools Fertilizers Training Tractor Ox plough	Crop disease Other crop damage Conflict Natural disaster
Turalei	4 of 4	Maize Sorghum Sesame Groundnuts Vegetables	Seed Tools Fertilizers Training Tractor Ox plough	Crop disease Other crop damage Natural disaster
Wunrok	4 of 4	Maize Sorghum Sesame Groundnuts	Seed Tools Fertilizers Training Tractor Ox plough Irrigation equipment	Crop disease Other crop damage Conflict Natural disaster

Pastoralist Practices, Challenges & Market Access

Payam	Bomas Engaged in Livestock	Primary Livestock	Bomas with Livestock Market	Major Problems
Ajak Kuac	3 of 3	Cattle Sheep Goats Other	0 of 3	Grazing land Diseases Water Market facilities Conflict Drought/Floods
Akoc	3 of 3	Cattle Sheep Goats Other	1 of 3	Grazing land Diseases Water Market facilities
Aweng	4 of 4	Cattle Sheep Goats Other	1 of 4	Grazing land Diseases Water Market facilities Conflict Drought/Floods
Panyok	4 of 4	Cattle Sheep Goats Other	3 of 4	Grazing land Diseases Water Drought/Floods
Turalei	4 of 4	Cattle Sheep Goats Other	1 of 4	Grazing land Diseases Water Drought/Floods
Wunrok	4 of 4	Cattle Sheep Goats Other	2 of 4	Grazing land Diseases Water Drought/Floods

Fishing Practices, Challenges & Alternate Means of Income

Payam	Bomas Engaged in Fisheries	Major Problems	Other Means of Income
Ajak Kuac	3 of 3	Lack of inputs Droughts/Floods Storage facility Market facility	Income generating activities
Akoc	3 of 3	Lack of inputs Droughts/Floods Market facility	Employment Income generating activities Other
Aweng	4 of 4	Lack of inputs Droughts/floods Storage facility Market facility Conflict	Income generating activities
Panyok	2 of 4	None	Employment Income generating activities Remittance Other
Turalei	4 of 4	Lack of inputs Droughts/floods Conflict	Income generating activities Remittance Other
Wunrok	4 of 4	Lack of inputs Droughts/floods Storage facility	Employment Income generating activities

Shocks & Coping Mechanisms

Payam	Period of Scarcity	Coping with Scarcity	Shocks in Past 2 Years	Coping with Shocks
Ajak Kuac	Jan – Sept	Reduced meals Forest fruits and vegetables Temporary migration Food aid Other	Drought Floods Disease Human epidemic Crop disease Pests Conflict	Wait for assistance Migrate Sell livestock
Akoc	May – Aug	Reduced meals Temporary migration	Disease Human epidemic Crop disease Other	Sell livestock Reduce meals
Aweng	Jan – Sept	Loans Reduced meals Forest fruits and vegetables Temporary migration Food aid Other	Drought Floods Disease Human epidemic Crop disease	Wait for assistance Migrate Sell livestock Other
Panyok	March – Sept	Reduced meals Temporary migration Food aid	Drought Floods Disease Human epidemic Crop disease Pests Conflict	Migrate Sell livestock
Turalei	March – Aug	Reduced meals Forest fruits and vegetables Other	Drought Disease Crop disease Pests	Wait for assistance Sell livestock Food from forest
Wunrok	Jan – Sept	Reduced meals Cash benefits Forest fruits and vegetables Temporary migration Other	Drought Floods Disease Human epidemic Crop disease	Migrate Sell livestock

HEALTH (BQ 2012 & HEALTH TECHNICAL)

Health Facilities by Type, Attendance & Availability of Trained Personnel

Payam	Hospitals	PHCCs	PHCUs	Bomas w/Facilities	Ave. Annual Facility Attendance ^[1]	Bomas w/Doctor	Bomas w/MCHW	Bomas w/Nurse
Ajak Kuac	0	1	1	2 of 3	6,177	0 of 2	0 of 2	0 of 2
Akoc	0	0	0	1 of 3	19,630	1 of 1	1 of 1	1 of 1
Aweng	0	2	3	4 of 4	912	0 of 5	0 of 5	1 of 5
Panyok	0	1	2	2 of 4	-	0 of 3	2 of 3	3 of 3
Turalei	0	0	3	1 of 4	540	0 of 2	0 of 2	1 of 2
Wunrok	0	0	3	3 of 4	-	0 of 3	1 of 3	1 of 3

^[1] Mean average facility attendance covers facility reported patient intake for 2009-2011.

Health Awareness Raising Activities & Epidemiological Indicators

Payam	Bomas with Education Awareness on HIV/AIDS (Source: BQ)	Facility Conducts Immunization	Top Illness U5s	Past Outbreak	Likely Outbreak
Ajak Kuac	0 of 2	2 of 2	Malaria	None	Cholera Whooping cough Other
Akoc	0 of 3	1 of 1	Malaria Pneumonia Diarrhea	None	None
Aweng	2 of 4	4 of 5	Malaria Pneumonia Diarrhea	Meningitis Cholera	Cholera Malaria Diarrhea Other
Panyok	1 of 3	0 of 2	Malaria	None	None
Turalei	2 of 3	2 of 2	Malaria	None	None
Wunrok	3 of 4	3 of 3	Malaria	Meningitis Cholera Diarrhea	Cholera Meningitis

WATER & SANITATION (BQ 2012)

Water Accessibility, Migration & Conflict

Payam	Most Year-Round Accessible Source	Water Accessible to All per Boma	Seasonal Migration	Conflict on Migration Route Due to Competition for Water per Boma	Local Water Conflicts per Boma
Ajak Kuac	River Borehole	3 of 3	Jan – June	1 of 3	2 of 3
Akoc	River Borehole Lakepond	3 of 3	None	0 of 3	3 of 3
Aweng	Borehole	4 of 4	Jan – May	2 of 4	3 of 4
Panyok	River	4 of 4	Feb – July	4 of 4	2 of 4
Turalei	River Borehole	4 of 4	Jan – June	0 of 4	0 of 4
Wunrok	River Borehole	4 of 4	None	0 of 4	1 of 4

Sanitation Facilities & Hygiene Education

Payam	Most Common Latrine Type	Bomas with Hygiene Education in Past 2 Years
Ajak Kuac	Public simple pit Public ventilated pit	1 of 3
Akoc	None	0 of 3
Aweng	None	3 of 4
Panyok	None	3 of 4
Turalei	None	3 of 4
Wunrok	Public simple pit Household simple toilet	3 of 4

EDUCATION (BQ 2012 & EDUCATION TECHNICAL)

School Availability by Grade, Curriculum & Estimated Attendance Rate

Payam	Schools <S4	Schools =S4	Schools <S6	Schools <S8	Curriculums	% Attending ^[1]	% Girls Attending
Ajak Kuac	2	3	4	0	New S. Sudan	25%	25%
Akoc	0	8	6	1	New S. Sudan	33%	75%
Aweng	2	3	3	0	New S. Sudan	100%	100%
Panyok	0	9	9	1	New S. Sudan	95%	75%
Turalei	0	6	6	2	New S. Sudan	25%	95%
Wunrok	1	2	2	3	New S. Sudan	100%	95%

^[1] Source: BQ 2012.

Causes of School Dropout & Urgent Needs

Payam	Boys Reasons for Dropping Out	Girls Reasons for Dropping Out	Bomas with School	Most urgent needs ^[2]
Ajak Kuac	Distance Conflict Family decision Migration Other	Distance Conflict Early marriage Family decision Other	3 of 3	Structural maintenance Other
Akoc	Distance Family decision Migration Other	School fees Distance Early marriage Family decision Migration Other	3 of 3	Structural maintenance Potable water
Aweng	Distance Family decision Migration Other	Distance Early marriage Family decision Migration Other	4 of 4	Trained teachers Structural maintenance Other
Panyok	Distance Family decision Other	School fees Distance Early marriage Family decision Other	4 of 4	Trained teachers Additional classes School feeding
Turalei	School fees Distance Family decision Migration Other	School fees Distance Early marriage Family decision Migration Other	4 of 4	Trained teachers Additional classes
Wunrok	Distance Family decision Migration Other	School fees Distance Early marriage Family decision Migration Other	4 of 4	School feeding Other

^[2] Source: BQ 2012.

PROTECTION (BQ 2012)

Internal & External Threats & Availability of Rule of Law Institutions

Payam	External Threat	Internal Threat	Women Feel Unsafe per Boma	Bomas with Police Station	Bomas with Traditional Court
Ajak Kuac	Armed conflict Drought Hunger Epidemics	Domestic violence Violence against women Seasonal road access Crop disease Livestock disease	3 of 3	1 of 3	3 of 3
Akoc	Armed conflict Drought Floods Hunger Epidemics	Crop disease Livestock disease	0 of 3	3 of 3	3 of 3
Aweng	Armed conflict Drought Floods Hunger Epidemics	Seasonal road access Crop disease Livestock disease	3 of 4	4 of 4	4 of 4
Panyok	Armed conflict Drought Floods Hunger Epidemics	Local conflict Domestic violence Violence against women Crop disease Livestock disease	3 of 4	3 of 4	3 of 4
Turalei	Armed conflict Drought Floods Hunger Epidemics	Crop disease Livestock disease	0 of 4	3 of 4	3 of 4
Wunrok	Drought Floods Hunger Epidemics	Crop disease Livestock disease	0 of 4	3 of 4	3 of 4



FORCIER CONSULTING
South Sudan's Research Firm



INTERNATIONAL ORGANIZATION FOR MIGRATION

New Industrial Area • Northern Bari • Juba • South Sudan
Email: iomjuba@iom.int | Web: <http://southsudan.iom.int/>