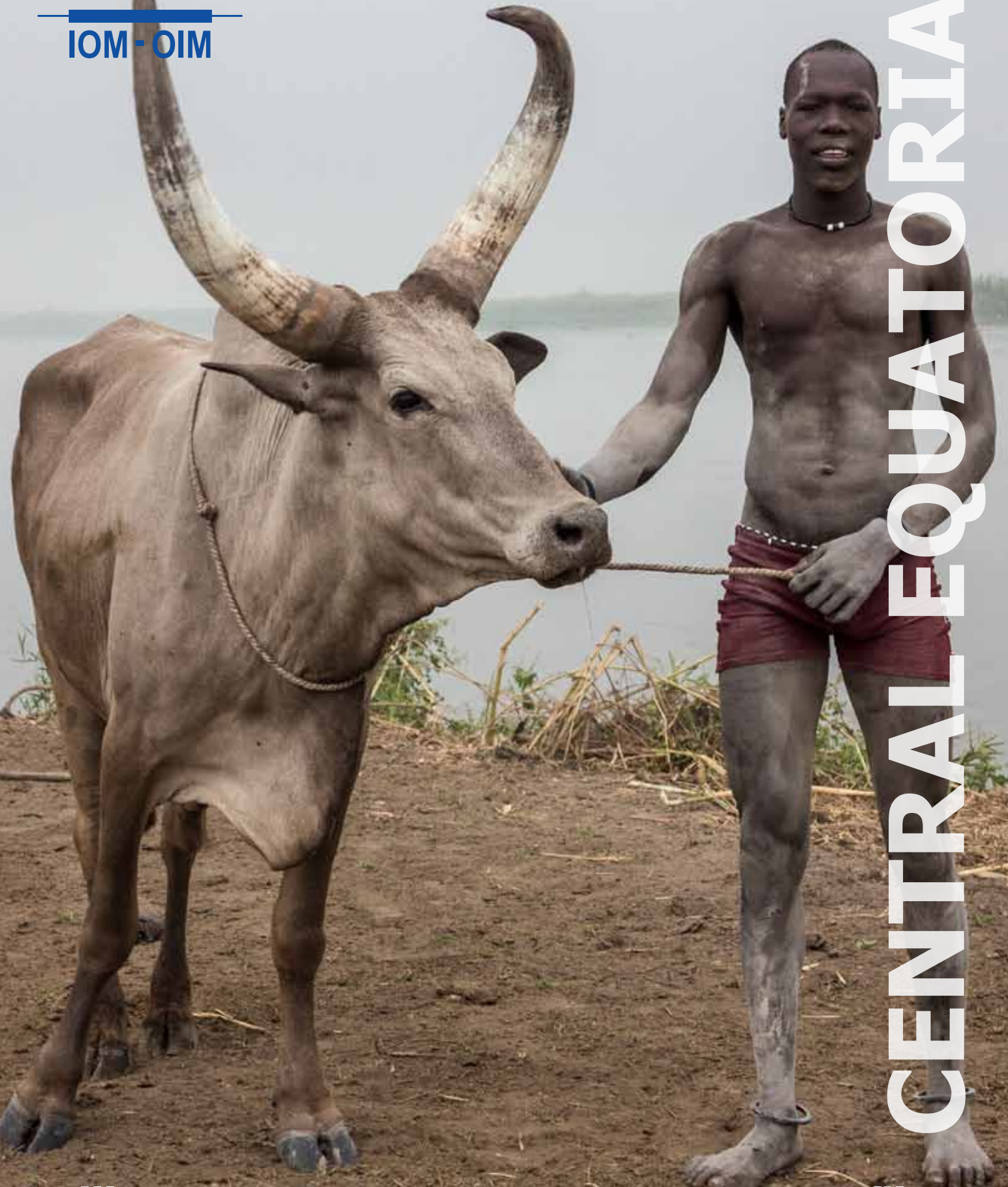




IOM-OIM



CENTRAL EQUATORIA

Village Assessment Survey County Profiles



VILLAGE ASSESSMENT SURVEY COUNTY PROFILES

CENTRAL EQUATORIA

2012 -2013

Kajo-Keji

Morobo

Yei

Lainya



The Village Assessment Survey (VAS) has been used by IOM since 2007 and is a comprehensive data source for South Sudan that provides granular data from 30 priority counties with the aim of informing reintegration assistance around basic services and infrastructure, livelihoods, land and shelter, WASH, education, health, and protection.

The most recent VAS represents IOM's largest effort to date and after consultations with the Government of South Sudan Relief and Rehabilitation Commission (RRC), UN agencies, and state-level partners, 30 priority counties were identified for the assessment. These comprise of 871 bomas, 197 payams, 468 health facilities, and 1,277 primary schools. There was a particular emphasis on assessing payams outside state capitals, where comparatively fewer comprehensive assessments have been carried out. IOM conducted the VAS in priority counties that represent an estimated 72% of the returnee population.

Methodology

The data presented are the results of four integrated questionnaires. At the boma level, a Boma Questionnaire gathered data in relation to basic services and socioeconomic conditions from boma committees, composed of the boma chief, as well as representatives of the youth, women, and returnees.

In bomas where the Boma Questionnaire was being administered, separate Health and Education Technical Questionnaires were also distributed to healthcare workers and education administrators in order to capture specific data on the level of capacity and structure of public services provided to the boma.

At the payam level, a Payam Authority Questionnaire was distributed to senior payam officials for an additional source of data and for comparison with the boma level responses. All of these research instruments supply triangulated sources of information, as they are independent verifications of information collected at the boma and payam level.

Selection Process and Data Analysis

State capitals were excluded from the assessment due to the fact that these had already been the subject of previous studies. Likewise, payams within state capitals were not surveyed while those outside the capital were included. In consultation with the RRC, UN agencies, and state-level partners, counties not previously considered were identified for the assessment.

Guide to Booklets

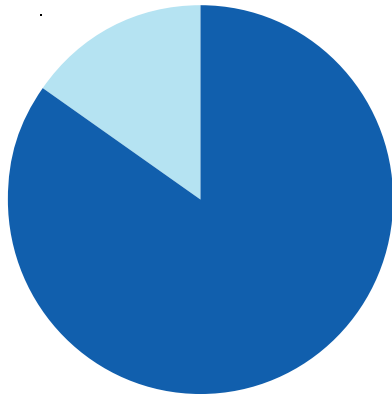
As a guide to reading the tables, please note that entries with a dash (-) indicate an absence of data while entries with a zero (0) indicate a total of zero responses.

The following booklets represent the data of VAS 2013 organised alphabetically by County.

COUNTY PROFILE

KAJO-KEJI, CENTRAL EQUATORIA

County Population Information



Current (2012) Population
(Source: Est. from NBS)

217,931

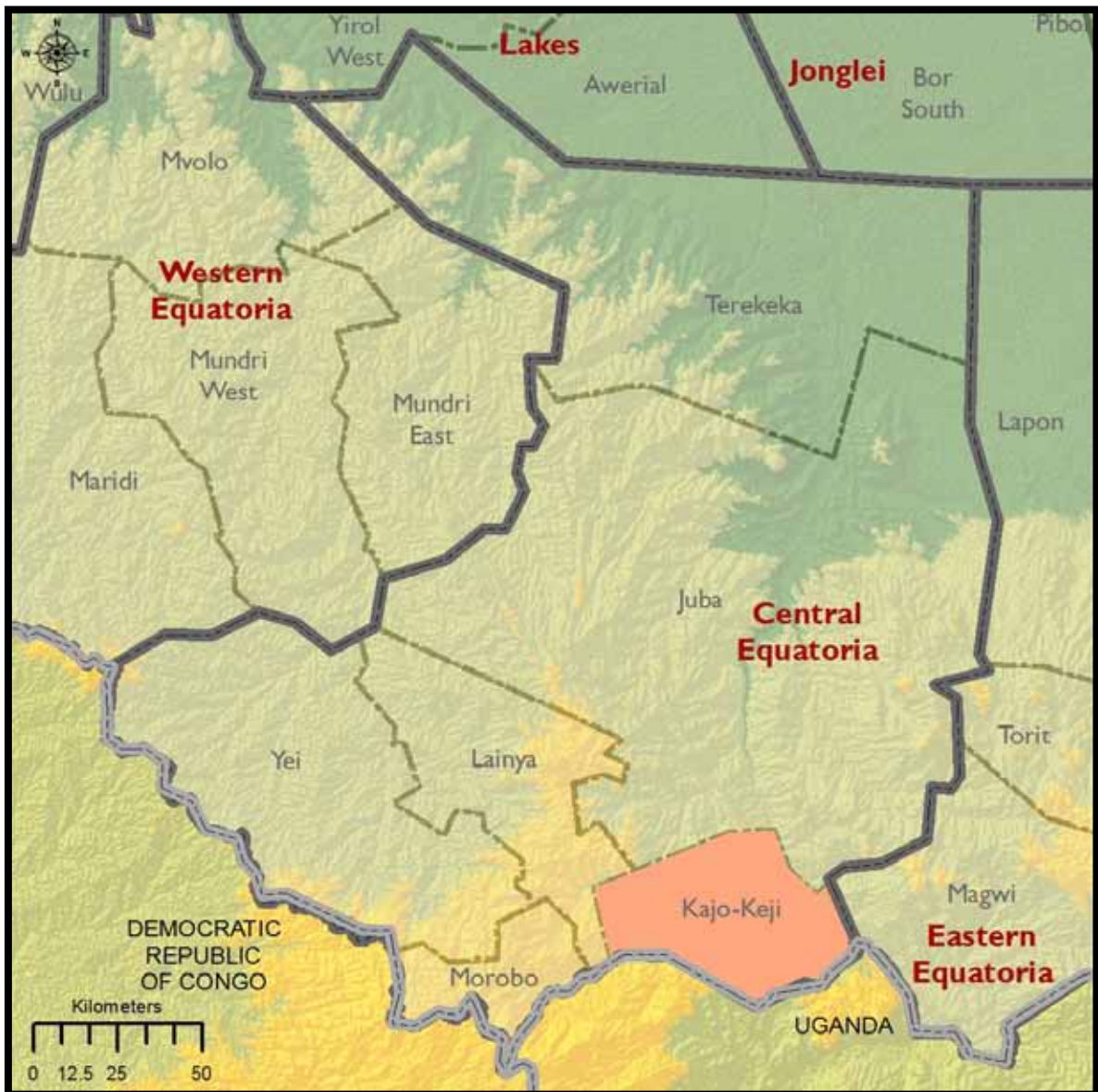
Returnees, Feb 2007-Dec 2012
(Source: IOM)

38,743

Ratio of Returnees to
Population

17.78%

KAJO-KEJI, CENTRAL EQUATORIA



Payams & Bomas		
Payam	Boma	Number of Villages
Kangapo I	Kigwo	6
	Kiri	4
	Leikor	15
	Limi	8
	Litoba	6
	Moijo	4
	Pamoju	8
	Sera Jale	8
Kangapo II	Bamurye	4
	Bori	13
	Jalinio	13
	Kinyiba	9
	Logili	7
	Logu	11
	Wudu	12
Lire	Kudaji	4
	Likamerok	4
	Longira	8
	Mere	9
	Miker	7
	Romogi	5
Liwolo	Ajio	10
	Kala	6
	Kendiri	6
	Kerwa	5
	Mangalatore	7
	Sokare	7
Nyepo	Ciaderu	15
	Kansuk	8
	Lori	9
	Rodo	8

Demographic Indicators of Respondents & Land Status

Payam	Main Tribes	Main Languages	Average Household Size (persons)	Main Settlement Types	Main Land Ownerships	Presence of Mines/UXO per Boma
Kangapo I	Kuku Kuku/Bari Bari Lugbare Madi	Kuku Kuku/Bari Bari English Lugbare	Max 11 Min 5	Permanent	Ancestral Other	1 of 8
Kangapo II	Kuku Kuku/Bari Acholi Madi Mundari	Kuku Kuku/Bari Arabic Kakuwa Madi	Max 12 Min 4	Permanent	Ancestral	4 of 7
Lire	Kuku Acholi	Kuku/Bari English Local Arabic Madi Simple Arabic	Max 13 Min 4	Permanent	Ancestral	2 of 6
Liwolo	Kuku Kuku/Bari Lugbara Bari	Kuku/Bari Lugbara	Max 11 Min 5	Permanent	Ancestral	1 of 6
Nyepo	Kuku Nyepo Bari	Bari Kuku	Max 11 Min 2	Permanent	Ancestral	0 of 4

LIVELIHOODS (BQ 2012)

Agricultural Practices & Challenges

Payam	Bomas Engaged in Farming	Food Crops Grown	Production Needs	Major Problems
Kangapo I	8 of 8	Maize Sorghum Sesame Groundnuts Vegetables Millet Cassava Other	Seed Tools Fertilizers Labor Training Other Tractor Compost fertilizer Ox Plough Irrigation equipment	Crop disease Other crop damage Market accessibility Conflict Natural disaster
Kangapo II	7 of 7	Maize Sorghum Sesame Groundnuts Vegetables Millet Cassava Rice Other	Land Seed Tools Fertilizers Labor Training Tractor Compost fertilizer Ox Plough	Crop disease Other crop damage Market accessibility Conflict Natural disaster
Lire	6 of 6	Maize Sorghum Sesame Groundnuts Vegetables Cassava	Seed Tools Fertilizers Training Tractor Compost fertilizer Ox Plough	Crop disease Other crop damage Market accessibility Conflict Natural disaster
Liwolo	6 of 6	Maize Sorghum Sesame Groundnuts Vegetables Millet Cassava Rice	Seed Tools Fertilizers Labor Training Compost fertilizer Ox Plough	Crop disease Other crop damage Market accessibility Conflict Natural disaster
Nyepo	4 of 4	Maize Sorghum Sesame Groundnuts Vegetables Millet Cassava	Seed Tools Fertilizers Training Other Tractor Compost fertilizer Ox Plough Irrigation equipment	Crop disease Other crop damage Market accessibility Conflict Natural disaster

Pastoralist Practices, Challenges & Market Access

Payam	Bomas Engaged in Livestock	Primary Livestock	Bomas with Livestock Market	Major Problems
Kangapo I	8 of 8	Cattle Sheep Goats Other	1 of 8	Grazing land Diseases Water Market facilities Conflict
Kangapo II	7 of 7	Cattle Sheep Goats Other	0 of 7	Grazing land Diseases Water Market facilities Conflict Drought/Floods
Lire	6 of 6	Cattle Sheep Goats Other	0 of 6	Grazing land Diseases Water Market facilities Conflict
Liwolo	6 of 6	Cattle Sheep Goats Other	0 of 6	Grazing land Diseases Water Market facilities Conflict
Nyepo	4 of 4	Cattle Sheep Goats Other	0 of 4	Grazing land Diseases Water Market facilities Conflict

Fishing Practices, Challenges & Alternate Means of Income

Payam	Bomas Engaged in Fisheries	Major Problems	Other Means of Income
Kangapo I	1 of 8	Lack of inputs Storage facility Market facility Other	Employment Income generating activities
Kangapo II	0 of 8	None	Employment Pension Income generating activities
Lire	1 of 6	Storage facility Market facility	Employment Income generating activities
Liwolo	1 of 6	Lack of inputs Droughts/Floods Storage facility Market facility	Employment Pension Income generating activities Remittance
Nyepo	2 of 4	Lack of inputs Storage facility Market facility	Income generating activities

Shocks & Coping Mechanisms

Payam	Period of Scarcity	Coping with Scarcity	Shocks in Past 2 Years	Coping with Shocks
Kangapo I	April – Aug	Loans Reduced meals Cash benefits Other	Disease Crop disease Pests Other	Wait for assistance Sell livestock
Kangapo II	April – Aug	Reduced meals Cash benefits Other	Drought Disease Human epidemic Crop disease Pests Conflict	Sell livestock
Lire	Jan – July	Reduced meals Cash benefits	Disease Crop disease Pests Other	Sell livestock
Liwolo	May – Sept	Loans Reduced meals Forest fruits and vegetables Temporary migration Food aid Other	Floods Disease Human epidemic Crop disease Pests Conflict Other	Wait for assistance Take loan Sell livestock Seek support
Nyepo	April – July	Reduce meals Cash benefits Forest fruits and vegetables	Disease Human epidemic Crop disease Pests Conflict	Sell livestock Other

HEALTH (BQ 2012 & HEALTHTECHNICAL)

Health Facilities by Type, Attendance & Availability of Trained Personnel

Payam	Hospitals	PHCCs	PHCUs	Bomas w/Facilities	Avg. Annual Facility Attendance ^[1]	Bomas w/Doctor	Bomas w/ MCHW	Bomas w/Nurse
Kangapo I	0	1	8	7 of 8	1,718	0 of 9	3 of 9	1 of 9
Kangapo II	1	0	12	7 of 7	1,856	1 of 13	5 of 13	5 of 13
Lire	0	0	7	6 of 6	1,524	0 of 7	4 of 7	0 of 7
Liwolo	0	2	8	5 of 6	2,265	0 of 10	1 of 10	2 of 10
Nyepo	0	1	5	4 of 4	16,342	0 of 6	1 of 6	1 of 6

^[1] Mean average facility attendance covers facility reported patient intake for 2009-2011.

Health Awareness Raising Activities & Epidemiological Indicators

Payam	Bomas with Education Awareness on HIV/AIDS (Source: BQ)	Facility Conducts Immunization	Top Illness U5s	Past Outbreak	Likely Outbreak
Kangapo I	8 of 8	9 of 9	Malaria	Measles	Measles Meningitis Yellow Fever
Kangapo II	7 of 7	13 of 13	Malaria Pneumonia Diarrhea Worm parasite Measles Acute respiratory infection Viral	Measles	Measles
Lire	6 of 6	7 of 7	Malaria Pneumonia Diarrhea Worm parasite Acute respiratory infection	None	None
Liwolo	5 of 6	8 of 8	Malaria	Measles	Measles Meningitis
Nyepo	3 of 4	6 of 6	Malaria Pneumonia Diarrhea Worm parasite	None	None

WATER & SANITATION (BQ 2012)

Water Accessibility, Migration & Conflict

Payam	Most Year-Round Accessible Source	Water Accessible to All per Boma	Seasonal Migration	Conflict on Migration Route Due to Competition for Water per Boma	Local Water Conflicts per Boma
Kangapo I	River Borehole	2 of 8	None	0 of 8	7 of 8
Kangapo II	None	1 of 7	None	0 of 7	6 of 7
Lire	River	1 of 6	None	0 of 6	6 of 6
Liwolo	River Borehole Hafir	0 of 6	None	0 of 6	5 of 6
Nyepo	None	0 of 4	None	0 of 4	2 of 4

KAJO-KEJI, CENTRAL EQUATORIA

Sanitation Facilities & Hygiene Education

Payam	Most Common Latrine Type	Bomas with Hygiene Education in Past 2 Years
Kangapo I	Household Simple Toilet Household Ventilated Pit	5 of 8
Kangapo II	Public Ventilated Pit Household Simple Toilet	6 of 7
Lire	Public Simple Pit Public Ventilated Pit Household Simple Toilet Household Ventilated Pit	6 of 6
Liwolo	Public Simple Pit Household Simple Toilet	5 of 6
Nyepo	Household Simple Toilet	3 of 4

EDUCATION (BQ 2012 & EDUCATION TECHNICAL)

School Availability by Grade, Curriculum & Estimated Attendance Rate

Payam	Schools <S4	Schools =S4	Schools <S6	Schools <S8	Curriculums	% Attending ^[1]	% Girls Attending
Kangapo I	1	14	0	-	Uganda New S Sudan	25%	25%
Kangapo II	1	1	1	-	Kenya Uganda New S Sudan	25%	25%
Lire	0	0	1	-	Uganda New S Sudan	25%	33%
Liwolo	3	5	2	-	Uganda New S Sudan	25%	25%
Nyepo	0	0	4	-	Uganda New S Sudan	25%	25%

^[1] Source: BQ 2012.

Causes of School Dropout & Urgent Needs

Payam	Boys Reasons for Dropping Out	Girls Reasons for Dropping Out	Bomas with School	Most Urgent Needs ^[2]
Kangapo I	School fees Distance Conflict Family decision Migration Other	School fees Distance Conflict Early marriage Family decision Migration Other	8 of 8	Trained teachers Additional classes Potable water
Kangapo II	School fees Distance Family decision Migration Other	School fees Distance Early marriage Family decision Migration Other	7 of 7	Trained teachers Structural maintenance School latrines Additional classes Books
Lire	School fees Distance Conflict Family decision Migration Other	School fees Distance Early marriage Family decision Migration	6 of 6	Trained teachers Structural maintenance
Liwolo	School fees Distance Family decision Migration Other	School fees Distance Conflict Early marriage Family decision Migration Other	6 of 6	Trained teachers Potable water School feeding Other
Nyepo	School fees Distance Family decision Migration	School fees Distance Early marriage Family decision Migration	4 of 4	Trained teachers Additional classes

^[2] Source: BQ 2012.

PROTECTION (BQ 2012)

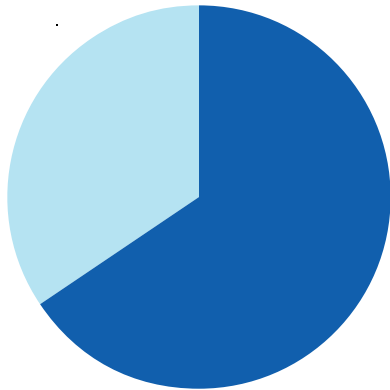
Internal & External Threats & Availability of Rule of Law Institutions

Payam	External Threat	Internal Threat	Women Feel Unsafe per Boma	Bomas with Police Station	Bomas with Traditional Court
Kangapo I	Armed conflict Hunger Epidemics	Local conflict Domestic violence Violence against women Seasonal road access Crop disease Livestock disease	1 of 8	2 of 8	8 of 8
Kangapo II	Drought Hunger Epidemics Other	Local conflict Domestic violence Violence against women Seasonal road access Crop disease Livestock disease	3 of 7	3 of 7	5 of 7
Lire	Armed conflict Hunger	Local conflict Domestic violence Seasonal road access Crop disease Livestock disease	3 of 6	3 of 6	6 of 6
Liwolo	Drought Floods Hunger Epidemics	Local conflict Domestic violence Violence against women Seasonal road access Crop disease Livestock disease	0 of 6	3 of 6	6 of 6
Nyepo	Armed conflict Hunger Epidemics	Local conflict Domestic violence Violence against women Seasonal road access Crop disease Livestock disease	0 of 4	2 of 4	4 of 4

COUNTY PROFILE

MOROBO, CENTRAL EQUATORIA

County Population Information



Current (2012) Population
(Source: Est. from NBS)

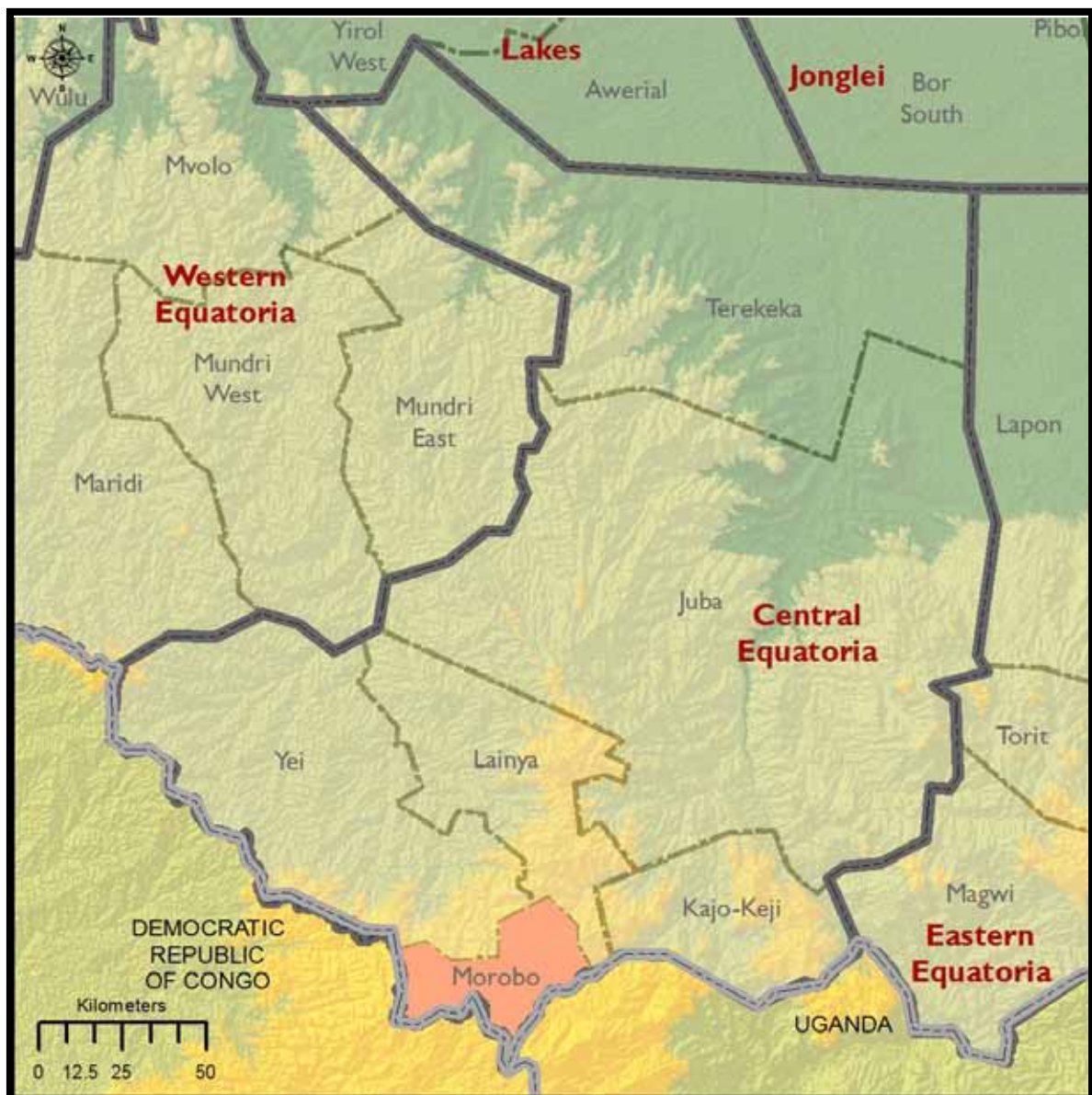
114,948

Returnees, Feb 2007-Dec 2012
(Source: IOM)

60,110

Ratio of Returnees to
Population

52.29%



MOROBO, CENTRAL EQUATORIA

Payams & Bomas		
Payam	Boma	Number of Villages
Gulumbi	Girili	5
	Kendila	7
	Kilikili	4
	Kindi	6
Kimba	Kaya	9
	Kimba	4
	Yondu	11
Lujulo	Kembe	7
	Kendre	5
	Yugufe	4
Panyume	Lujulo East	4
	Nyori	4
	Panyume	6
	Yaribe	7
Wudabi	Aloto	3
	Geri	4
	Nyei	3

Demographic Indicators of Respondents & Land Status

Payam	Main Tribes	Main Languages	Average Household Size (persons)	Main Settlement Types	Main Land Ownerships	Presence of Mines/UXO per Boma
Gulumbi	Kakwa Dinka	Kakuwa Kakwa Local Arabic	Max 13 Min 5	Permanent	Ancestral	3 of 4
Kimba	Kakwa Lugbara	Kakwa Lugbara	Max 15 Min 4	Permanent	Ancestral	3 of 3
Lujulo	Keliko	Keliko Kakwa Local Arabic	Max 14 Min 6	Permanent	Ancestral Other	1 of 3
Panyume	Kakwa Lugwara	Kakwa Arabic Bari Congo	Max 12 Min 3	Permanent	Ancestral Communal	2 of 4
Wudabi	Keliko Kuku Moro Pajulu	Keliko Kuku/Bari Local Arabic	Max 16 Min 2	Permanent	Ancestral	0 of 3

LIVELIHOODS (BQ 2012)

Agricultural Practices & Challenges

Payam	Bomas Engaged in Farming	Food Crops Grown	Production Needs	Major Problems
Gulumbi	4 of 4	Maize Sorghum Sesame Groundnuts Vegetables Cassava Other	Seeds Tools Fertilizers Labor Training Tractor Ox plough	Crop disease Other crop damage Market accessibility Conflict
Kimba	3 of 3	Maize Sorghum Sesame Groundnuts Vegetables Millet Cassava Rice	Seeds Tools Labor Training Tractor Compost fertilizers Ox plough Irrigation equipment	Crop disease Other crop damage Market accessibility Conflict Natural disaster
Lujulo	3 of 3	Maize Sorghum Sesame Groundnuts Vegetables Millet Cassava Rice Other	Seeds Tools Fertilizers Labor Training Tractor Compost fertilizers Ox plough Irrigation equipment	Crop disease Other crop damage Market accessibility Conflict Natural disaster
Panyume	4 of 4	Maize Sorghum Sesame Groundnuts Vegetables Millet Cassava Other	Seeds Tools Labor Training Tractor Ox plough	Crop disease Other crop damage Market accessibility Conflict Natural disaster
Wudabi	3 of 3	Maize Sorghum Sesame Groundnuts Vegetables Millet Cassava Rice	Seeds Tools Training Tractor Ox plough Other	Crop disease Other crop damage Market accessibility Conflict Natural disaster

Pastoralist Practices, Challenges & Market Access

Payam	Bomas Engaged in Livestock	Primary Livestock	Bomas with Livestock Market	Major Problems
Gulumbi	4 of 4	Cattle Sheep Goats Other	2 of 4	Grazing land Diseases Water Market facilities Conflict
Kimba	3 of 3	Cattle Sheep Goats	0 of 3	Grazing land Diseases Water Market facilities Conflict
Lujulo	3 of 3	Cattle Sheep Goats	0 of 3	Grazing land Diseases Market facilities Conflict
Panyume	4 of 4	Cattle Sheep Goats Other	1 of 4	Grazing land Diseases Water Market facilities Conflict
Wudabi	3 of 3	Cattle Sheep Goats	0 of 3	Diseases Market facilities Conflict

Fishing Practices, Challenges & Alternate Means of Income

Payam	Bomas Engaged in Fisheries	Major Problems	Other Means of Income
Gulumbi	0 of 4	-	Income generating activities
Kimba	1 of 3	-	Pension Income generating activities
Lujulo	0 of 3	-	Income generating activities
Panyume	1 of 4	-	Employment Income generating activities
Wudabi	0 of 3	-	Income generating activities

Shocks & Coping Mechanisms

Payam	Period of Scarcity	Coping with Scarcity	Shocks in Past 2 Years	Coping with Shocks
Gulumbi	May – June	Reduced meals Cash benefits Other	Disease Crop disease Pests Conflict Other	Sell livestock Other
Kimba	May – July	Reduced meals Cash benefits	Disease Human epidemic Crop disease Pests Other	Wait for assistance Sell livestock
Lujulo	May – June	Reduced meals Cash benefits Forest fruit and vegetables Other	Disease	Wait for assistance
Panyume	May – July	Reduced meals Cash benefits Forest fruit and vegetables Other	Drought Floods Disease Human epidemic Crop disease Pests	Wait for assistance Sell livestock
Wudabi	May - July	Reduced meals Cash benefits Forest fruit and vegetables	Disease Crop disease Pests	Sell livestock

HEALTH (BQ 2012 & HEALTH TECHNICAL)

Health Facilities by Type, Attendance & Availability of Trained Personnel

Payam	Hospitals	PHCCs	PHCUs	Bomas w/Facilities	Ave. Annual Facility Attendance ^[1]	Bomas w/ Doctor	Bomas w/ MCHW	Bomas w/ Nurse
Gulumbi	0	1	3	3 of 4	1,674	0 of 4	0 of 4	1 of 4
Kimba	0	1	2	3 of 3	-	0 of 3	3 of 3	1 of 3
Lujulo	0	1	2	3 of 3	2,528	0 of 3	0 of 3	0 of 3
Panyume	0	1	1	2 of 4	1,434	0 of 2	1 of 2	1 of 2
Wudabi	0	1	1	2 of 3	2,962	0 of 2	2 of 2	1 of 2

^[1] Mean average facility attendance covers facility reported patient intake for 2009-2011.

Health Awareness Raising Activities & Epidemiological Indicators

Payam	Bomas with Education Awareness on HIV/AIDS (Source: BQ)	Facility Conducts Immunization	Top Illness U5s	Past Outbreak	Likely Outbreak
Gulumbi	3 of 4	2 of 3	Malaria	0 of 4	None
Kimba	3 of 3	3 of 3	Malaria Diarrhea	2 of 3	None
Lujulo	3 of 3	3 of 3	Malaria	1 of 3	Measles
Panyume	1 of 4	2 of 2	Malaria Pneumonia Diarrhea Acute respiratory infection	0 of 2	None
Wudabi	3 of 3	2 of 2	Malaria	0 of 2	None

WATER & SANITATION (BQ 2012)

Water Accessibility, Migration & Conflict

Payam	Most Year-Round Accessible Source	Water Accessible to All per Boma	Seasonal Migration	Conflict on Migration Route Due to Competition for Water per Boma	Local Water Conflicts per Boma
Gulumbi	Stream	3 of 4	Feb – Dec	2 of 4	3 of 4
Kimba	River Stream Spring Borehole	0 of 3	None	0 of 3	3 of 3
Lujulo	River Stream	0 of 3	None	0 of 3	0 of 3
Panyume	River Borehole	0 of 4	None	0 of 4	3 of 4
Wudabi	River Stream	0 of 3	None	0 of 3	0 of 3

Sanitation Facilities & Hygiene Education

Payam	Most Common Latrine Type	Bomas with Hygiene Education in Past 2 Years
Gulumbi	Household simple toilet	4 of 4
Kimba	Household simple toilet	3 of 3
Lujulo	Household simple toilet	3 of 3
Panyume	Public ventilated pit Household simple toilet	2 of 4
Wudabi	Household simple toilet Household flush toilet	3 of 3

EDUCATION (BQ 2012 & EDUCATION TECHNICAL)

School Availability by Grade, Curriculum & Estimated Attendance Rate

Payam	Schools <S4	Schools =S4	Schools <S6	Schools <S8	Curriculums	% Attending ^[1]	% Girls Attending
Gulumbi	0	0	0	0	New S. Sudan	25%	31%
Kimba	0	0	0	7	Uganda New S. Sudan	34%	95%
Lujulo	1	1	1	1	Uganda New S. Sudan	25%	25%
Panyume	0	6	0	0	Old Sudan Uganda New S. Sudan	44%	42%
Wudabi	1	3	1	0	New S. Sudan	25%	25%

^[1] Source BQ 2012

Causes of School Dropout & Urgent Needs

Payam	Boys Reasons for Dropping Out	Girls Reasons for Dropping Out	Bomas with School	Most urgent needs ^[2]
Gulumbi	Family decision	Early marriage Family decision	4 of 4	Additional classes
Kimba	School fees Distance Family decision Migration Other	School fees Distance Early marriage Family decision Migration Other	3 of 3	Trained teachers Additional classes
Lujulo	School fees Distance Family decision Other	School fees Distance Early marriage Family decision	3 of 3	Trained teachers
Panyume	School fees Distance Family decision Migration Other	School fees Distance Early marriage Family decision Migration	4 of 4	Trained teachers Additional classes
Wudabi	School fees Distance Family decision	School fees Distance Early marriage Family decision	3 of 3	Trained teachers

^[2] Source: BQ 2012.

PROTECTION (BQ 2012)

Internal & External Threats & Availability of Rule of Law Institutions

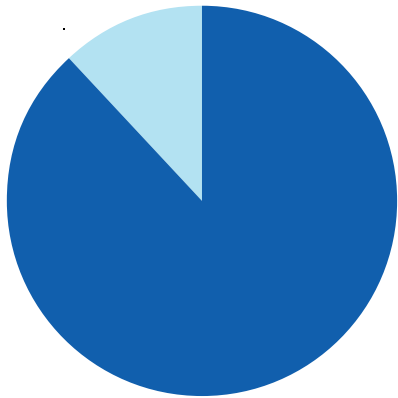
Payam	External Threat	Internal Threat	Women Feel Unsafe per Boma	Bomas with Police Station	Bomas with Traditional Court
Gulumbi	Drought Hunger	Local conflict Domestic violence Violence against women Seasonal road access Crop disease Livestock disease	None	3 of 4	4 of 4
Kimba	Hunger Other	Local conflict Domestic violence Violence against women Seasonal road access Crop disease Livestock disease	None	2 of 3	3 of 3
Lujulo	Hunger	Domestic violence Violence against women Seasonal road access Crop disease Livestock disease	None	1 of 3	3 of 3
Panyume	Drought Floods Hunger Epidemics	Domestic violence Violence against women Seasonal road access Crop disease Livestock disease	None	0 of 4	4 of 4
Wudabi	Hunger	Domestic violence Seasonal road access Crop disease Livestock disease	None	2 of 3	3 of 3

MOROBO, CENTRAL EQUATORIA

COUNTY PROFILE

YEI, CENTRAL EQUATORIA

County Population Information



Current (2012) Population
(Source: Est. from NBS)

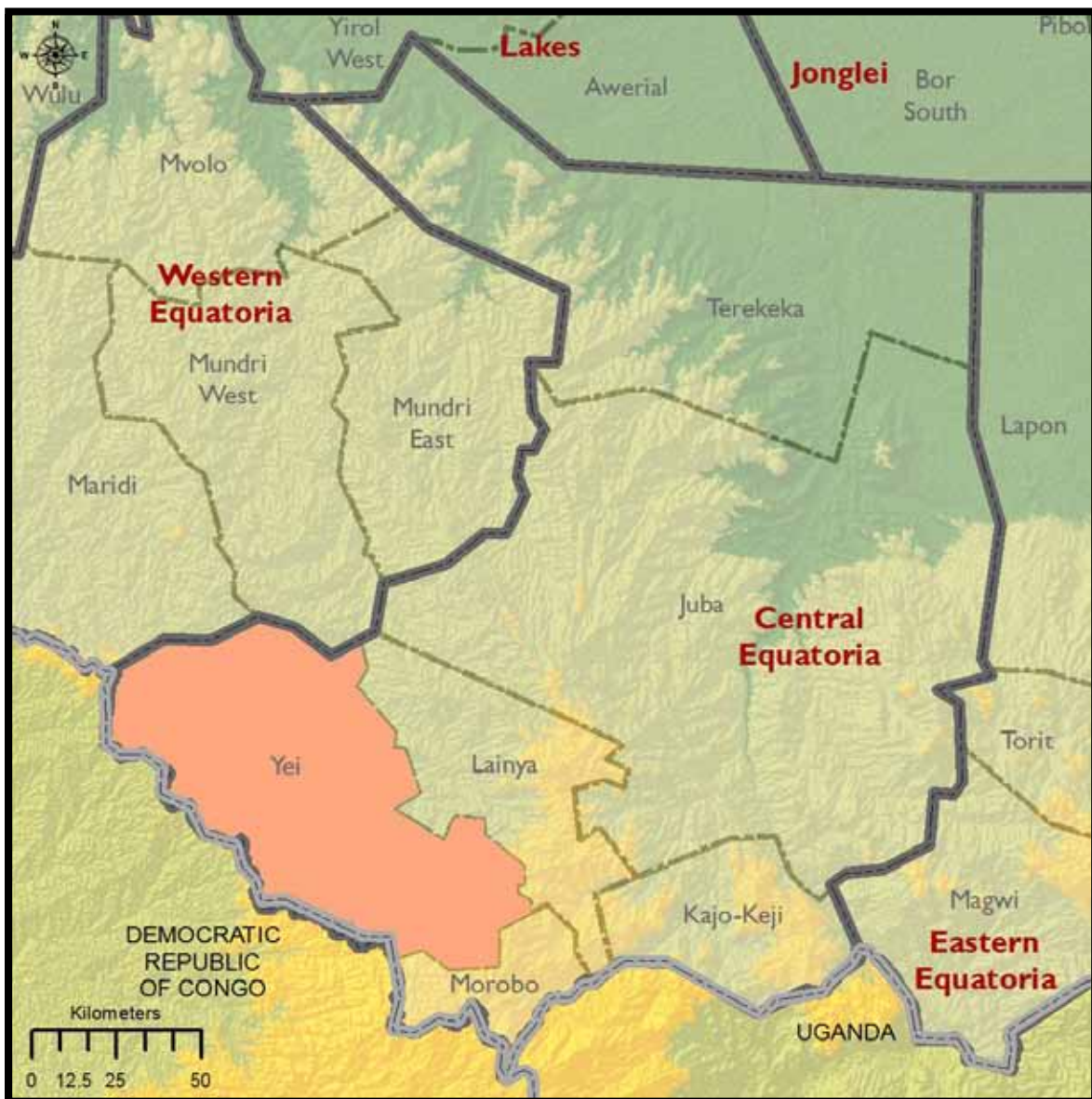
223,502

Returnees, Feb 2007-Dec 2012
(Source: IOM)

30,159

Ratio of Returnees to
Population

13.49%



Payams & Bomas		
Payam	Boma	Number of Villages
Lasu	Asole	3
	Lasu	4
	Tokori	3
Mugwo	Jombu	3
	Longamere	6
	Payawa	5
	Yari	6
Otogo	Goja	4
	Logo	5
	Mongo	4
	Ombasi	7
	Wotogo	6
Tore	Adio	2
	Avokaya	6
	Baka	6
	Mundu	5
Yei Town	Gimuni	5
	Jonsuku	3
	Minyori	2
	Pokula	2
	Ronyi	4
	Yei	9

Payams & Bomas		
Payam	Boma	Number of Villages
Lasu	Asole	3
	Lasu	4
	Tokori	3
Mugwo	Jombu	3
	Longamere	6
	Payawa	5
	Yari	6
Otogo	Goja	4
	Logo	5
	Mongo	4
	Ombasi	7
	Wotogo	6
Tore	Adio	2
	Avokaya	6
	Baka	6
	Mundu	5
Yei Town	Gimuni	5
	Jonsuku	3
	Minyori	2
	Pokula	2
	Ronyi	4
	Yei	9

Demographic Indicators of Respondents & Land Status

Payam	Main Tribes	Main Languages	Average Household Size (persons)	Main Settlement Types	Main Land Ownerships	Presence of Mines/UXO per Boma
Lasu	Kakwa Keliko Pojuju Kakuwa	Kakwa Keliko Pojuju Kakuwa	Max 14 Min 3	Permanent Nomadic	Individual Communal Ancestral	0 of 3
Mugwo	Kakwa Keliko	Bari Kakwa Keliko	Max 16 Min 4	Permanent	Ancestral	1 of 4
Otogo	Kakwa Avukaya Kuku Mundu	Kakwa Arabic Avukaya Mundu	Max 13 Min 3	Permanent	Individual Communal	1 of 5
Tore	Avukaya Baka Mundu Mundari	Avukaya Baka Mundu Mundari	Max 15 Min 5	Permanent	Communal Ancestral	2 of 4
Yei Town	Kakwa	Bari Kakwa	Max 10 Min -	Permanent	Individual Ancestral Leased	6 of 6

LIVELIHOODS (BQ 2012)

Agricultural Practices & Challenges

Payam	Bomas Engaged in Farming	Food Crops Grown	Production Needs	Major Problems
Lasu	3 of 3	Maize Sorghum Groundnuts Vegetables Millet Cassava Rice Other	Land Tractor	Crop disease Other crop damage Market accessibility Conflict Natural disaster
Mugwo	4 of 4	Maize Sorghum Sesame Groundnuts Vegetables Cassava Rice	Seed Tools Fertilizer Training Tractor Ox plough	Crop disease Other crop damage Market accessibility Conflict Natural disaster
Otogo	5 of 5	Maize Sorghum Sesame Groundnuts Vegetables Millet Cassava Rice	Tools Fertilizer Labor Training	Crop disease Other crop damage Market accessibility Conflict
Tore	4 of 4	Maize Sorghum Sesame Groundnuts Millet Cassava Rice Other	Seed Tools Fertilizer Labor Training Tractor Irrigation equipment	Crop disease Other crop damage Market accessibility Conflict Natural disaster
Yei Town	6 of 6	Maize Sorghum Sesame Groundnuts Vegetables Millet Cassava Rice Other	Seed Tools Labor Training Tractor Irrigation equipment	Crop disease Other crop damage Market accessibility Conflict Natural disaster

Pastoralist Practices, Challenges & Market Access

Payam	Bomas Engaged in Livestock	Primary Livestock	Bomas with Livestock Market	Major Problems
Lasu	3 of 3	Cattle Sheep Goats Other	2 of 3	Grazing land Diseases Market facilities Conflict Droughts/Floods
Mugwo	4 of 4	Cattle Sheep Goats	2 of 4	Grazing land Diseases Water Market facilities Conflict
Otogo	5 of 5	Cattle Sheep Goats	1 of 5	Grazing land Diseases Water Market facilities Conflict
Tore	4 of 4	Goats	0 of 4	Grazing land Diseases Water Market facilities Conflict
Yei Town	6 of 6	Cattle Sheep Goats	3 of 6	Grazing land Diseases Water Market facilities Conflict

Fishing Practices, Challenges & Alternate Means of Income

Payam	Bomas Engaged in Fisheries	Major Problems	Other Means of Income
Lasu	0 of 3	None	Income generating activities
Mugwo	0 of 4	None	Income generating activities
Otogo	1 of 5	None	Income generating activities
Tore	0 of 4	None	Employment Pension Income generating activities
Yei Town	0 of 6	None	Employment Other

Shocks & Coping Mechanisms

Payam	Period of Scarcity	Coping with Scarcity	Shocks in Past 2 Years	Coping with Shocks
Lasu	May - July	Forest fruit and vegetables	Disease Crop disease Pests	Wait for assistance Sell livestock
Mugwo	April – August	Reduced meals Cash benefits	Disease Crop disease Pests	Sell livestock
Otogo	May - July	Reduced meals Forest fruit and vegetables Other	Disease Crop disease Pests	Take loan Daily labor Reduce meal
Tore	May – July	Reduced meals Cash benefits Forest fruit and vegetables Other	Other	-
Yei Town	May - July	Reduced meals Cash benefits Forest fruit and vegetables Temporary migration Extended family support	Disease Human epidemic Crop disease Pests Conflict	Wait for assistance Migrate Sell livestock

HEALTH (BQ 2012 & HEALTH TECHNICAL)

Health Facilities by Type, Attendance & Availability of Trained Personnel

Payam	Hospitals	PHCCs	PHCUs	Bomas w/Facilities	Ave. Annual Facility Attendance ^[1]	Bomas w/ Doctor	Bomas w/ MCHW	Bomas w/ Nurse
Lasu	0	1	5	3 of 3	904	0 of 6	0 of 6	0 of 6
Mugwo	0	1	4	4 of 4	1,518	0 of 5	1 of 5	1 of 5
Otogo	0	2	4	5 of 5	1,384	0 of 6	2 of 6	2 of 6
Tore	0	2	5	4 of 4	1,362	0 of 7	3 of 7	2 of 7
Yei Town	1	1	5	5 of 6	4,787	3 of 7	1 of 7	2 of 7

^[1] Mean average facility attendance covers facility reported patient intake for 2009-2011.

Health Awareness Raising Activities & Epidemiological Indicators

Payam	Bomas with Education Awareness on HIV/AIDS (Source: BQ)	Facility Conducts Immunization	Top Illness U5s	Past Outbreak	Likely Outbreak
Lasu	2 of 3	6 of 6	Malaria	None	None
Mugwo	3 of 4	5 of 5	Malaria	None	None
Otogo	3 of 4	5 of 6	Malaria Pneumonia	None	None
Tore	4 of 4	7 of 7	Malaria	None	None
Yei Town	6 of 6	7 of 7	Malaria Pneumonia Diarrhea Acute respiratory infection	Yellow fever	Yellow fever Measles

WATER & SANITATION (BQ 2012)

Water Accessibility, Migration & Conflict

Payam	Most Year-Round Accessible Source	Water Accessible to All per Boma	Seasonal Migration	Conflict on Migration Route Due to Competition for Water per Boma	Local Water Conflicts per Boma
Lasu	River	2 of 3	None	None	0 of 3
Mugwo	River	1 of 4	None	None	4 of 4
Otogo	River Borehole	5 of 5	None	None	2 of 5
Tore	Stream Borehole	1 of 4	None	None	4 of 4
Yei Town	River Borehole Tap	3 of 6	None	None	4 of 6

Sanitation Facilities & Hygiene Education

Payam	Most Common Latrine Type	Bomas with Hygiene Education in Past 2 Years
Lasu	Public simple pit Public ventilated pit Household simple toilet	3 of 3
Mugwo	Public simple pit Public other	4 of 4
Otogo	Public simple pit Public ventilated pit	4 of 5
Tore	Public simple pit Household simple toilet	3 of 4
Yei Town	Public simple pit Public ventilated pit Household simple toilet Household ventilated pit	4 of 6

EDUCATION (BQ 2012 & EDUCATION TECHNICAL)

School Availability by Grade, Curriculum & Estimated Attendance Rate

Payam	Schools <S4	Schools =S4	Schools <S6	Schools <S8	Curriculums	% Attending ^[1]	% Girls Attending
Lasu	0	0	6	0	New S. Sudan	25%	67%
Mugwo	1	2	6	1	Old Sudan Uganda New S. Sudan	25%	33%
Otogo	0	3	14	0	New S. Sudan	100%	100%
Tore	2	5	4	0	Old Sudan Uganda New S. Sudan	95%	95%
Yei Town	0	2	19	6	Kenya Uganda New S. Sudan	37%	58%

^[1] Source BQ 2012

Causes of School Dropout & Urgent Needs

Payam	Boys Reasons for Dropping Out	Girls Reasons for Dropping Out	Bomas with School	Most urgent needs ^[2]
Lasu	Distance Family decision Migration Other	Distance Migration Other	3 of 3	Trained teachers Books
Mugwo	School fees Family decision Migration Other	School fees Early marriage Family decision Migration Other	4 of 4	Trained teachers Structural maintenance
Otogo	Distance Family decision Other	Early marriage Family decision Migration Other	5 of 5	Trained teachers Potable water
Tore	School fees Distance Conflict Family decision Migration Other	School fees Distance Conflict Early marriage Family decision Other	4 of 4	Trained teachers Additional classes Other
Yei Town	School fees Distance Family decision Migration Other	School fees Distance Early marriage Family decision Migration Other	5 of 6	Trained teachers Books

^[2] Source: BQ 2012.

PROTECTION (BQ 2012)

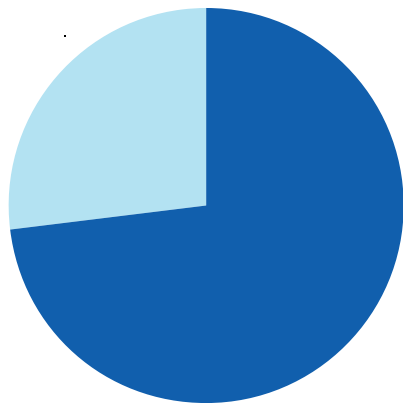
Internal & External Threats & Availability of Rule of Law Institutions

Payam	External Threat	Internal Threat	Women Feel Unsafe per Boma	Bomas with Police Station	Bomas with Traditional Court
Lasu	Armed conflict Drought Floods Hunger Epidemics	Local conflict Domestic violence Violence against women Crop disease Livestock disease	0 of 3	2 of 3	3 of 3
Mugwo	-	Domestic violence Seasonal road access Crop disease Livestock disease	0 of 4	1 of 4	4 of 4
Otogo	Epidemics	Local conflict Domestic violence Violence against women Seasonal road access Crop disease Livestock disease	0 of 5	2 of 5	5 of 5
Tore	Epidemics Other	Violence against women	0 of 4	3 of 4	4 of 4
Yei Town	Hunger Epidemics	Local conflict Domestic violence Violence against women Seasonal road access Crop disease Livestock disease	1 of 6	4 of 6	6 of 6

COUNTY PROFILE

LAINYA, CENTRAL EQUATORIA

County Population Information



Current (2012) Population
(Source: Est. from NBS)

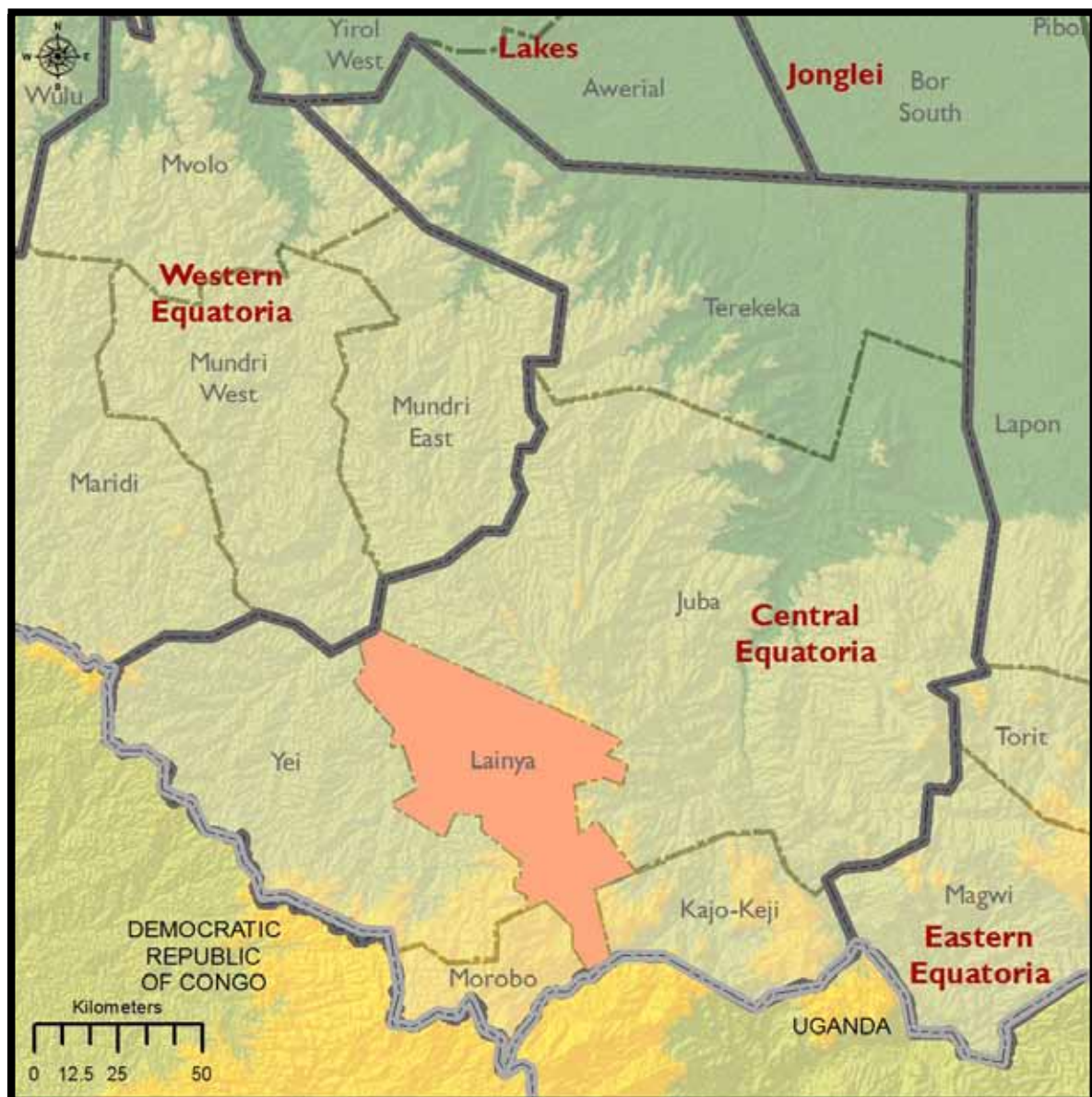
99,095

Returnees, Feb 2007-Dec 2012
(Source: IOM)

36,300

Ratio of Returnees to
Population

36.63%



LAINYA, CENTRAL EQUATORIA

Payams & Bomas		
Payam	Boma	Number of Villages
Kenya	Kenya	13
	Limbe	14
	Loka	18
Kopera	Kopera	6
	Korobe	5
	Mundu	6
Lainya	Bereka	5
	Logwilli	3
	Lokurubang	7
Mukaya	Biri	9
	Dimo	10
	Lorega	5
Wuji	Dongoro	7
	Koyoki	5
	Wuji	12

Demographic Indicators of Respondents & Land Status

Payam	Main Tribes	Main Languages	Average Household Size (persons)	Main Settlement Types	Main Land Ownerships	Presence of Mines/UXO per Boma
Kenyi	Pojulu Kakwa Kuku	Arabic Bari English Pojulu	Max 14 Min 7	Permanent	Ancestral	3 of 3
Kopera	Pajulu Mundari	Bari Arabic	Max - Min -	Permanent	Ancestral	2 of 3
Lainya	Pojulu Nuer	Bari Dinka English	Max 6 Min 4	Permanent	Communal Ancestral	2 of 3
Mukaya	Pojulu	Bari Pojulu	Max 10 Min 5	Permanent	Ancestral	1 of 3
Wuji	Pojulu Bari Kuku	Bari Arabic English Kuku	Max 11 Min 8	Permanent Temporary	Ancestral Other	2 of 3

LIVELIHOODS (BQ 2012)

Agricultural Practices & Challenges

Payam	Bomas Engaged in Farming	Food Crops Grown	Production Needs	Major Problems
Kenyi	3 of 3	Maize Sorghum Sesame Groundnuts Vegetables Millet Cassava Other	Seed Tools Tractor	Crop disease Other crop damage Conflict Natural disaster
Kopera	3 of 3	Maize Sorghum Sesame Groundnuts Cassava	Land Seeds Tools Training Tractor Ox Plough Irrigation Equipment	Crop disease Other crop damage Market accessibility Natural disaster
Lainya	3 of 3	Maize Sorghum Sesame Groundnuts Vegetables Cassava Other	Seed Tools Fertilizer Training Tractor Compost Fertilizers Ox Plough	Crop disease Other crop damage Market accessibility Conflict Natural disaster
Mukaya	3 of 3	Maize Sorghum Sesame Groundnuts Millet Cassava	Seeds Tools Training Tractor	None Crop disease Other crop damage Market accessibility Conflict Natural disaster
Wuji	3 of 3	Maize Sorghum Sesame Groundnuts Vegetables Millet Cassava Other	Land Seed Tools Fertilizers Labor Training Tractor Compost Fertilizers Ox Plough Irrigation Equipment	Insects Crop disease Other crop damage Market accessibility Conflict Natural disaster

Pastoralist Practices, Challenges & Market Access

Payam	Bomas Engaged in Livestock	Primary Livestock	Bomas with Livestock Market	Major Problems
Kenyi	3 of 3	Cattle Sheep Goats Other	0 of 3	Diseases
Kopera	3 of 3	Cattle Sheep Goats	2 of 3	Grazing Land Diseases Water Market Facilities
Lainya	3 of 3	Cattle Sheep Goats	2 of 3	Grazing Land Diseases Water Conflict
Mukaya	3 of 3	Cattle Sheep Goats	0 of 3	Grazing Land Diseases Water Market Facilities Conflict
Wuji	1 of 3	Cattle Sheep Goats	1 of 3	Grazing Land Diseases Water Market Facilities Conflict

Fishing Practices, Challenges & Alternate Means of Income

Payam	Bomas Engaged in Fisheries	Major Problems	Other Means of Income
Kenyi	0 of 3	None	Other
Kopera	2 of 3	None	Income Other
Lainya	0 of 3	None	Pension Income Other
Mukaya	0 of 3	None	Income Other
Wuji	0 of 3	None	Employment Income Remittance

Shocks & Coping Mechanisms

Payam	Period of Scarcity	Coping with Scarcity	Shocks in Past 2 Years	Coping with Shocks
Kenyi	June – July	Reduced meals Cash benefits Forest fruits and vegetables Other	Disease Crop disease Pests Other	Sell livestock Daily labor
Kopera	May – August	Loans Reduced meals	Disease	Sell livestock
Lainya	April – August	Reduced meals Extended family support	Drought Disease Pests Conflict Other	Migrate Sell livestock Flee
Mukaya	May – July	Loans Reduced meals Forest fruit and vegetables Food aid Other	Disease Crop disease Pests Conflict Other	Sell livestock
Wuji	May – December	Reduced meals Extended family support Other	Disease Crop disease Pests	Sell livestock

HEALTH (BQ 2012 & HEALTH TECHNICAL)

Health Facilities by Type, Attendance & Availability of Trained Personnel

Payam	Hospitals	PHCCs	PHCUs	Bomas w/Facilities	Ave. Annual Facility Attendance ^[1]	Bomas w/ Doctor	Bomas w/ MCHW	Bomas w/ Nurse
Kenyi	0	2	3	3 of 3	2,065	0 of 5	5 of 5	3 of 5
Kopera	0	1	2	3 of 3	187	0 of 3	2 of 3	0 of 3
Lainya	0	0	4	3 of 3	2,169	1 of 4	2 of 4	2 of 4
Mukaya	0	0	5	3 of 3	1,257	0 of 5	5 of 5	0 of 5
Wuji	0	0	3	2 of 3	684	0 of 3	2 of 3	0 of 3

^[1] Mean average facility attendance covers facility reported patient intake for 2009-2011.

Health Awareness Raising Activities & Epidemiological Indicators

Payam	Bomas with Education Awareness on HIV/AIDS (Source: BQ)	Facility Conducts Immunization	Top Illness U5s	Past Outbreak	Likely Outbreak
Kenyi	3 of 3	5 of 5	Malaria Diarrhea	None	None
Kopera	3 of 3	3 of 3	Malaria Pneumonia Diarrhea	None	Cholera Measles
Lainya	3 of 3	4 of 4	Malaria	Measles	Measles
Mukaya	3 of 3	5 of 5	Diarrhea Malaria	None	None
Wuji	3 of 3	3 of 3	Malaria Pneumonia Diarrhea	None	None

WATER & SANITATION (BQ 2012)

Water Accessibility, Migration & Conflict

Payam	Most Year-Round Accessible Source	Water Accessible to All per Boma	Seasonal Migration	Conflict on Migration Route Due to Competition for Water per Boma	Local Water Conflicts per Boma
Kenyi	Stream Borehole	2 of 3	-	-	0 of 3
Kopera	-	3 of 3	-	-	0 of 3
Lainya	Spring Borehole	0 of 3	-	-	3 of 3
Mukaya	River	0 of 3	-	-	0 of 3
Wuji	Borehole	1 of 3	-	-	2 of 3

Sanitation Facilities & Hygiene Education

Payam	Most Common Latrine Type	Bomas with Hygiene Education in Past 2 Years
Kenyi	Household flush toilet	3 of 3
Kopera	Public simple pit Household flush toilet	3 of 3
Lainya	Household flush toilet	3 of 3
Mukaya	Household flush toilet	2 of 3
Wuji	Public simple pit Public ventilated pit Household flush toilet	3 of 3

EDUCATION (BQ 2012 & EDUCATION TECHNICAL)

School Availability by Grade, Curriculum & Estimated Attendance Rate

Payam	Schools <S4	Schools =S4	Schools <S6	Schools <S8	Curriculums	% Attending ^[1]	% Girls Attending
Kenyi	5	2	1	5	Kenya Uganda New S. Sudan	25%	42%
Kopera	0	3	0	3	Uganda New S. Sudan	100%	100%
Lainya	0	0	3	3	Old Sudan Kenya Uganda New S. Sudan	17%	42%
Mukaya	0	2	2	3	Uganda New S. Sudan	25%	95%
Wuji	1	4	2	0	Old Sudan Kenya Uganda New S. Sudan	100%	100%

^[1] Source BQ 2012

Causes of School Dropout & Urgent Needs

Payam	Boys Reasons for Dropping Out	Girls Reasons for Dropping Out	Bomas with School	Most urgent needs ^[2]
Kenyi	School fees Family decision Other	Early marriage Other	3 of 3	Trained teachers
Kopera	School fees Distance Family decision Migration	School fees Distance Early marriage Migration	3 of 3	Trained teachers Other
Lainya	School fees Distance Family decision Migration	School fees Distance Early marriage Family decision Migration	3 of 3	Trained teachers
Mukaya	School fees Distance Family decision Other	School fees Distance Early marriage Family decision	3 of 3	Trained teachers
Wuji	School fees Distance Family decision Migration Other	School fees Distance Early marriage Family decision Migration Other	3 of 3	Trained teachers

^[2] Source: BQ 2012.

PROTECTION (BQ 2012)

Internal & External Threats & Availability of Rule of Law Institutions

Payam	External Threat	Internal Threat	Women Feel Unsafe per Boma	Bomas with Police Station	Bomas with Traditional Court
Kenyi	-	Domestic violence Violence against women Crop disease Livestock disease	0 of 3	1 of 3	3 of 3
Kopera	Hunger Epidemics	Local conflict Domestic violence Violence against women Seasonal road access Crop disease Livestock disease	1 of 3	3 of 3	3 of 3
Lainya	Armed conflict Drought Hunger	Domestic violence Seasonal road access Crop disease Livestock disease	1 of 3	2 of 3	3 of 3
Mukaya	Armed conflict Hunger	Local conflict Domestic violence Violence against women Seasonal road access Crop disease Livestock disease	0 of 3	1 of 3	3 of 3
Wuji	Hunger	Domestic violence Violence against women Crop disease Livestock disease	0 of 3	0 of 3	3 of 3



FORCIER CONSULTING
South Sudan's Research Firm



INTERNATIONAL ORGANIZATION FOR MIGRATION

New Industrial Area • Northern Bari • Juba • South Sudan
Email: iomjuba@iom.int | Web: <http://southsudan.iom.int/>